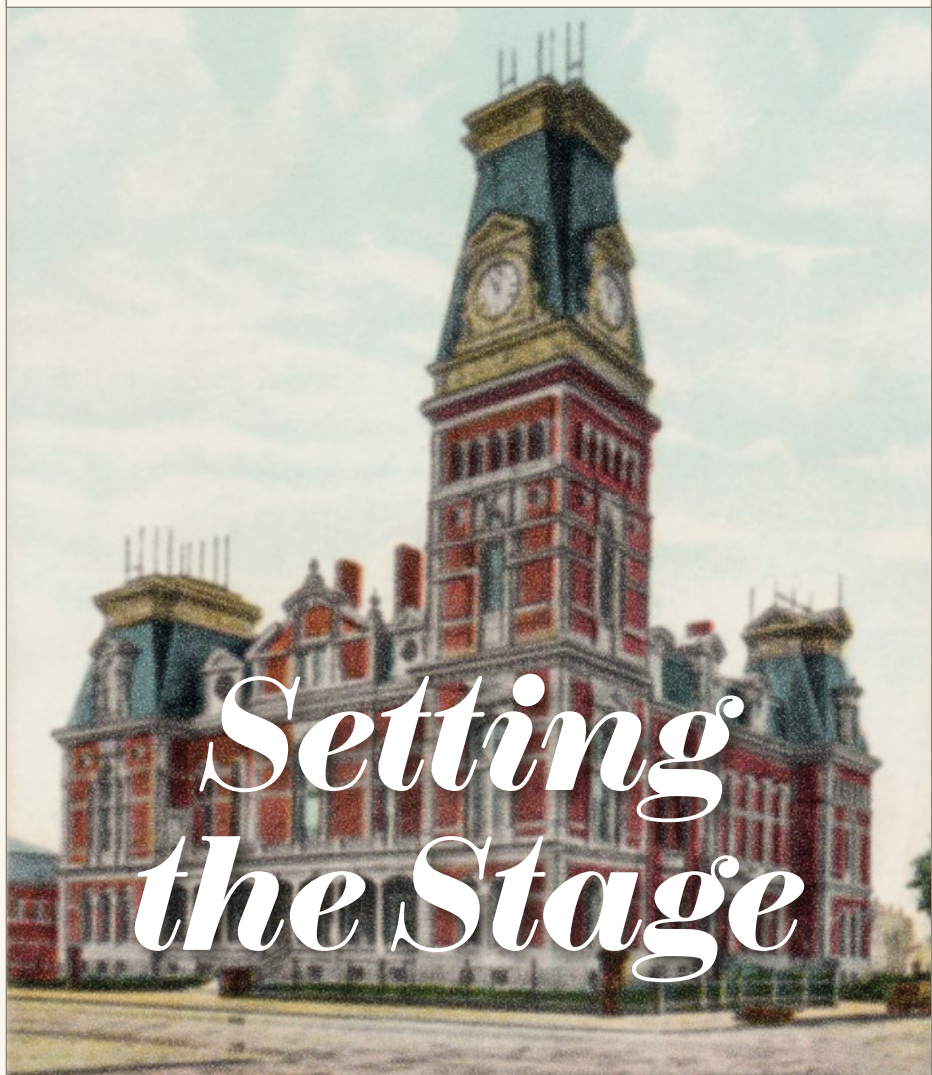


# REPORT

HERITAGE FUND 2024





# Scenes

Prologue: Letter from Tracy Souza 3

## **ACT 1: INVEST**

1.1 Community Fund 5

1.2 Love Where You Live 10

1.3 Figures and Grantees 14

## **ACT 2: INVOLVE**

2.1 Leadership Convenings 16

2.2 Cast of Community Leaders 18

Intermission: Financials 28

## **ACT 3: INSPIRE**

3.1 Scholarships 30

3.2 New Funds 32

Epilogue: Take a Bow, Tracy 36

Crew: Board & Staff 38



# Prologue

## Letter from Tracy Souza

Despite the global chaos in 2024, Heritage Fund continued to successfully further our vision of creating a Bartholomew County where everyone achieves their greatest quality of life. Guided by the clarity of our mission to: inspire generosity; gather and grow diverse and inclusive community leaders; and act with impact, we focused on several projects that promoted downtown vitality, celebrated local arts, culture, and architecture and encouraged youth development.

Heritage Fund was able to set the stage for some exciting implementation actions in 2025, acting somewhat like a production company. We recruited talent, found resources, coordinated scheduling, promoted ideas, and marketed opportunities within our impact areas — all with an eye for creating blockbuster wins for Bartholomew County.

We stepped onto the entertainment stage by leading a feasibility study for a community performing arts center. Our consulting team from Theatre Projects Inc. held many focus groups, individual interviews, and an online survey that received 823 responses. Overwhelmingly, people said they wanted local entertainment options. The consultants also noted that the community has several good performance venues that are not well utilized. Their recommendation was to focus on programming existing spaces vs. building additional capacity. Following that recommendation, efforts shifted from a building to creating performance opportunities across the existing venues.

New community leaders and new partnerships emerged in response to the entertainment projects as well as the momentum created by the Office of Downtown Development to create a welcoming and active downtown for all residents. Project Encore, launched just before the year ended, has captured imagination and excitement for a downtown performance venue that showcases local and regional talent and generates activity.

Our community has been recognized for our growing diverse population that is celebrated throughout the year with festivals that educate and entertain. It is rewarding to see some new leaders from all backgrounds stepping forward to take leadership roles and happily sharing their culture, talents and passion for Columbus.

This will be my final curtain call (annual report) as I plan to retire in mid-2025. All changes are bittersweet, but I am leaving Heritage Fund knowing that the organization is on a terrific path with highly motivated and talented staff members and a dedicated Board of Directors. It has been an incredible honor to have spent the past 14 years working with so many generous and creative donors throughout Bartholomew County.

Thank you,



Tracy Souza  
President and CEO



# Act I, Scene I

## INVEST – Community Fund

Our Community Fund directs grantmaking for projects and programs that support efforts to improve the quality of life for residents today and in the future. We annually award more than \$700,000 in unrestricted grants from the Community Fund to build a better Bartholomew County. Here's a sampling of grants that helped set the stage for our community partners in 2024 and advanced our Impact Areas of Downtown Vitality; Youth Development; and Arts, Culture, and Architecture:

### Areas of Impact Strategies & Funding Priorities



**Downtown Vitality** Seeking to develop our community's assets to help make our downtown a vibrant and thriving place for all community members



**Youth Development** Seeking to improve the quality of life for all children in Bartholomew County and achieving positive outcomes in youth mental health, social emotional learning and early learning



**Arts, Culture, and Architecture** Seeking to enhance our community's experience with and connection to arts, culture, and architecture



Ongoing grant support



## Indiana University

J. Irwin Miller Architecture Program was awarded a \$15,810 grant to support the Community Design-Build Program in partnership with the city of Columbus. The first project was a bus shelter for the ColumBUS transit system and new community-based projects will be developed in future years.

Photos: Ruvien del Isenia  
Courtesy of the J. Irwin Miller Architecture Program at Indiana University



## Bartholomew County Public Library

BCPL and community partners see a need for a comprehensive community app to showcase events, resources, and opportunities for the residents of Bartholomew County. A \$15,000 grant supported development of the BarthCo OnTheGo app that will house information regarding things to do, places to go, resources available, and more. The goal of the app is to bring more attention to the wide array of offerings available to residents of all ages.

A \$50,000 grant also supported the repurposing of BCPL's Indiana Room into a Teen Area, space specifically organized for teen engagement and programming.



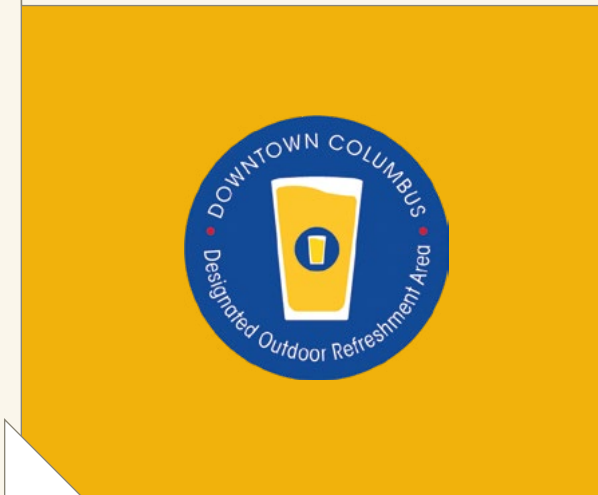
## Columbus Area Arts Council

CAAC was awarded a \$10,000 grant to assist a two-day strategic planning session and plan development to ensure the organization's long-term sustainability and relevance. As part of the plan, the Board of Directors identified 6th Street Arts Alley as a distinctive community asset with untapped potential. The upcoming seasonal street closure and Arts Alley Parklet, opening in May 2025, are direct outcomes of that vision and planning.



## Office of Downtown Development

A \$75,000 grant continued support of the Office of Downtown Development focused on retention and development to ensure attraction of and success for downtown businesses. Executive Director Ike DeClue said 2024 was a year of growth, opportunities and enhanced experiences for residents, visitors, and businesses alike. 2024 highlights for the organization included the launch of a Downtown Improvement Grant program to support new business openings and encourage existing businesses to enhance spaces and create a more welcoming downtown. A Columbus Social District was introduced with the establishment of a Designated Outdoor Refreshment Area (DORA), which allows visitors to enjoy alcoholic beverages in designated outdoor areas while exploring downtown. The JazzIN Columbus free outdoor concert series kicked off on Fourth Street, and new businesses Blacksheep Pizza and White Star Meat Market & Deli opened their doors on Washington Street.







## Early Learning

The third year of an annual \$50,000 grant to Bartholomew County Early Learning Coalition continued support of early learning efforts. The work of an early learning coordinator and the mission of the Community Education Coalition seeks to ensure all families have access to affordable, high-quality, child care and early learning opportunities for children ages birth to 5 to create a path to academic success and wellness. The coordinator facilitates, guides and connects providers, employers and community stakeholders in Bartholomew County to answer the question: "How can we work together to build an early learning system that is accessible for children and families and sustainable for early learning programs?"

"2024 was a year of engagement and planning. Over 150 voices helped shape our work, and we know we must find community-wide solutions to increase compensation for early educators so they can afford to stay in the field, decrease administrative costs associated with running a quality program and find new ways to build and align resources. Our local families are depending on it so they can continue to go to school and work and so children can thrive."

— Christine Waters  
Early Learning Manager,  
Community Education Coalition/  
Ivy Tech Columbus



## BEHIND THE SCENES

Heritage Fund not only provides support but often works behind the scenes to help partners secure additional funding. We helped develop an Early Years Initiative proposal that was awarded a \$245,000 grant through Early Learning Indiana that supports expansion of Family School Partners home visits to African American, Latino, and multiracial families and bilingual Spanish home visitor positions. Additionally, this grant supported expansion of the Growing Readers program and distribution of books, educational handouts, and other materials at medical well-visits between birth and age 5.



## Growing Readers

Support continued for the successful Growing Readers program partnership between Bartholomew County Public Library, Viewpoint Books and local pediatric and family medicine offices that encourages children to hear/read 1,000 books before kindergarten. An \$11,500 grant helped with the annual book and caregiver education distribution to children during their preventative care visits with their doctor between ages 0 and 5. Viewpoint curates and delivers books and literacy education packages to the offices, and BCPL assists with programming. Growing Readers supports the proven benefits of early exposure to books and reading at a young age, as well as the importance of providing education to empower families to take part in their children's literacy development.

## Su Casa

A \$40,000 grant supported the Su Casa Youth Engagement Coordinator's activities that not only include leading and coordinating Making, Education, Thrive.Around.Summertime (METAS) camp, but also continuing Youth Engagement activities throughout the year. The coordinator is also able to now provide services for core basic needs for families with youth including referrals to partner organizations, document and legal support and application assistance.

# Act I, Scene II

INVEST – Love Where You Live

Our annual Love Where You Live campaign directly benefits the Community Fund. 2024 saw the addition of Love Where You Live – The Event! Hundreds joined us for a fun-filled fall afternoon downtown in October to celebrate Heritage Fund's commitment to building a better community and was an opportunity for more of the public to learn about the impact of the community foundation and how their support makes a difference.

In addition to free family activities, special events included a concert on the Library Plaza. Landmark Columbus Foundation joined us for the Rock the Block Dance Party under 'InterOculus' downtown to close out the event and celebrate our vibrant culture and spirit with a night of dance, music and community.



LOVE WHERE  
YOU LIVE  
COLUMBUS, IN



Thanks to donors and match dollars through Lilly Endowment Inc's Giving Indiana Funds for Tomorrow VIII program, our Community Fund grew by more than \$2.5 million! A special thank you to our community partners for helping make the event possible and local artist Annie Shields who created the 2024 Love Where You Live design.

#### Community Partners

Bartholomew County Historical Society  
Bartholomew County Public Library  
Columbus Area Arts Council  
Columbus Area Visitors Center  
Columbus Propeller  
Force Construction  
kidscommons  
Landmark Columbus Foundation  
Office of Downtown Development  
Viewpoint Books  
Red Arch Community Events





LOVE  
WHERE  
YOU  
LIVE

&  
ROCK  
THE  
BLOCK





# Act I, Scene III

## INVEST – Figures and Grantees

**\$6,687,949**

Total Grants  
(Unrestricted Grants + Restricted Grants)

**\$783,240**

Total Awarded from Community Fund  
(Unrestricted)

**\$5,904,709**

Total Restricted Grants  
(Made at recommendation of the donor)

**44**

Grants Given from the Community Fund

**34**

Nonprofits Received Community Fund Grants

### Organizations Supported Through Community Fund

Advocates for Children

Bartholomew Consolidated School Corp

Bartholomew County Historical Society

Bartholomew County Parks Department

Bartholomew County Public Library

Calvary Pentecostal Church

Columbus Area Arts Council

Columbus Area Chamber Foundation

Columbus Regional Health Foundation

Community Education Coalition

Council for Youth Development

Ecumenical Assembly of Bartholomew County Churches/Love Chapel

Family Service, Inc

Foundation for Youth

Foundation Giving Hope Inc.

Game Changer, Inc.

Hawcreek-Flat Rock Area Endowment Fund

Indiana Immunization Coalition

Indiana Landmarks

Indiana University Foundation

International Community Development Inc. of Columbus

kidscommons

Landmark Columbus Foundation

Lincoln-Central Neighborhood Family Center

Next Gen Downtown Fund

REACH Columbus, Inc.

Riversong Music, Inc.

Sandi's Closet, Inc.

Sans Souci, Inc.

South Asian Foundation of Bartholomew County

Su Casa

The Arc of Bartholomew County

Turning Point Domestic Violence Services

United Way of Bartholomew County

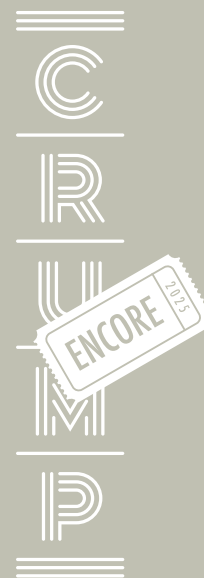
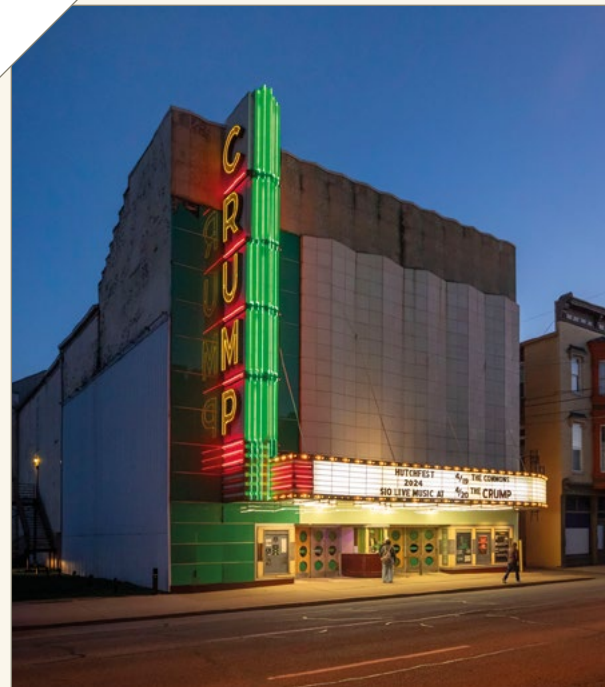


# Act II, Scene I

## INVOLVE – Leadership Convenings

As the community foundation, Heritage Fund plays many parts in working with donors and organizations to understand needs and opportunities in our community. Sometimes we take the lead. Sometimes we play a supporting role. But we're always working behind the scenes to build a better Bartholomew County.

As part of our ongoing mission to gather and grow community leaders, Heritage Fund hosted a third Leadership Convening in 2024, this time focused on Downtown Vitality. Panelists joined us in April at The Crump Theatre to discuss ideas to energize and draw visitors and residents alike to downtown.



We also convened community organizations and leaders around the idea of advancing a performing arts center in Columbus. With a \$60,000 grant from Lilly Endowment Inc. and a handful of generous local donations, Theatre Projects consultants were hired for a feasibility study of a new performing arts space.

The study included meetings with individuals and focus groups and a successful survey that yielded more than 800 responses and indicated a strong desire for local entertainment and performance options. Theatre Projects turned the spotlight on opportunities we have to better utilize Columbus' "robust inventory" of existing performance venues and the idea of Columbus LIVE for centralized programming to better support that demand.

Following that study, the curtain was raised on Project Encore. Heritage Fund awarded a \$50,000 grant for the initiative with the objective of advancing the grassroots volunteer effort and to begin a formal capital campaign to fully renovate the 135-year-old Crump, Indiana's oldest remaining known theater in operation. A multipurpose 750-seat entertainment complex is in the works to attract local and regional audiences to the downtown through quality touring programming as well as local community events.

# Act II, Scene II

INVOLVE – Cast of Community Leaders

## Jason Hatton

Bartholomew County Public Library

Jason Hatton is a history buff. Today he's hard at work fulfilling his dream of a master's degree in the subject. But you can't be a history fan without reflecting on your own from time to time. For Jason, that's easy. He looks back at growing up in Columbus as an avid visitor to the library he now heads.

"I've always loved Columbus and wanted to stay because this is where I want to be. I'm grateful to make a difference in my community for not just today but for tomorrow — we'll last a very long time. To be able to think about that — it really is a great gig."

There was a feeling of disbelief shortly after taking the executive director position 10 years ago when he remembers stopping on the main library staircase and thinking of all his trips there when he was younger.

"Reading was so important. What I attribute any rise in my success to was from reading. Retreating into my books is my happy place."

But the library is more than the beloved books that line its shelves. For Jason, it's a partner with fellow organizations that provide a variety of services to the community.

"I want the library to be an amazing resource for the community. I consider us very fortunate. We are a unique nonprofit with a stable income so we can focus on the work. We take that

**I think Heritage Fund is one of those crucial and central organizations. It's a leader in so many ways.**

mandate very seriously to use that advantage to be able to increase our impact. We are always striving for that. It's something we talk about a lot."

Like the three simple words of its mission: Create. Community. Connect.

"It says so much about what we try to do."

The library continues to explore new topics and increase education — and empathy — with a "welcome-to-all environment." It invests in its 60-plus staff, many of whom hold master's degrees, with continued training.

And it continues to expand — not just in its literary offerings — but in space.

"The buildings are a resource. The staff is a resource. We are connected with other organizations and the knowledge and skills to enhance the community."

It recently acquired the America and Roby Anderson Community Center on McClure Road and an adjacent lot to become an east-side location that will host a variety of library services. This follows taking ownership of the former North Christian Church property in early 2024. One of the city's treasured seven National Historic Landmarks, the location will help meet a third of the student populations on the city's north side now within walking distance of the library.

"I'm super excited about that. There's a real opportunity for the community with these spaces. Reading is absolutely fundamental to everything that we do." Jason is grateful for Heritage Fund support that goes beyond just the financial.

"I think Heritage Fund is one of those crucial and central organizations. It's a leader in so many ways. It strives to know what the community is needing, and it is fantastic to have an institute able to invest in the community in the right places."

**READING  
IS ABSOLUTELY  
FUNDAMENTAL  
TO EVERYTHING  
THAT WE DO.**





# Karen Garcia Nunez

## Family School Partners

Karen Garcia Nunez began her work with Family School Partners as a volunteer in 2016. She believed in the organization so much that today she's its director.

"I loved the program. I loved the mission."

The local nonprofit, a program of Bartholomew Consolidated School Corp and a United Way of Bartholomew County partner agency, provides educational resources through valuable home visitations for families with children from birth through age 5.

"We are coaching parents to be the first and best teachers of their children to be kindergarten-ready. Many times they don't know where to start. We make families aware when they might need special help. Otherwise they might not seek it by themselves."

Volunteers provide monthly educational lessons for children under age 2 and semimonthly lessons for those with children ages 2–5. The home visits are also educational for parents and guardians and help to remove educational barriers and provide resources for which the families might not be aware or have access to, like pre-kindergarten classes.

The visits come at the crucial time for children with the majority of brain development happening by age 5.

FSP educators currently visit about 165 homes, monitoring children's milestones and development screenings and referring families for additional assistance like special education or pediatricians when necessary. Important relationships are formed with families. "They build trust, and they talk to them."

**We make families aware  
when they might need special help.  
Otherwise they might not seek  
it by themselves.**

## THEY PUT THEIR SOULS INTO IT.

FSP families face at least two risk factors, including single and/or teen parenthood; homelessness; family history of substance abuse; school issues for older siblings; language and/or cultural barriers; parents needing help; and crisis situations.

Having support from Heritage Fund, not just through grant assistance but in finding other funding sources, makes doubly the difference for the organization.

"It's very important to us — to have a bigger impact."

Heritage Fund support enabled Karen's participation in Leadership Bartholomew County, which has helped bolster her leadership skills and community networking. An Early Learning Indiana grant has enabled program expansion with intentional outreach to African American, Latino, and multiracial families and a new bilingual educator position, critical to helping FSP meet community needs.

"It was great. We had a long waiting list from different levels of the community."

In addition to education, FSP also provides community engagement opportunities, including the monthly Juntos con FSP Spanish storytime at Bartholomew County Public Library and Touch-A-Truck interactive event for children to explore community service vehicles. And there's graduation celebrations to recognize each child's transition from the program to kindergarten.



The organization also is working on better serving families who speak Haitian Creole, with educators being joined by a BCSC interpreter during their first visit and providing books in the language. Parent curriculum also will be translated.

In the director's role for only about a year and a half, Karen is proud to know she's helping to guide parents in their children's development. While she's no longer visiting families in her leadership role, Karen works on fundraising, marketing and management and knows the families are in good hands with her partner educators. "They put their souls into it."

"It's not just me, it's Family School Partners. I need to represent it the best way I can. That's very important to me. I feel happy to go to work every day."

# Steve Sanders

Stephen Sanders Consulting

For Steve Sanders, there's no better place than Columbus. And he knew it — even at a young age. When his family relocated to Kokomo during his junior year at Columbus North High School, he opted to move back solo at 16, bunking with friends until graduation. He later pursued studies in Tennessee for a career in the music industry before joining the Navy but again eventually found his way back here. Home.

"I didn't realize it's not like this everywhere. Columbus was it."

He and wife Meredith, who also tried it out elsewhere before coming back — as have both sets of the couple's parents now — work to impress upon their three young sons an appreciation for the distinctiveness of their hometown.

Steve spent a successful 15-year career as a program leader with Cummins, taking pride in marketing and creating specialty programs in the auto enthusiast market. "I fell in love with the creativity and constant problem-solving. The wheels in motion."

His entrepreneurial wheels kept turning, and in 2023 he decided to open his own company, Stephen Sanders Consulting, where he continues to be in creator mode. It also has afforded more time to dedicate to other passions like performing arts promotions, such as programming with Columbus LIVE and Columbus Area Arts Council the recent A Night of Two Taylors "Oil Can Concert" at the former North Christian Church, and city revitalization work as a founding member and current board member with the Office of Downtown Development.

"It's one of the coolest things about Columbus — the like-minded people who want to see downtown be better. To me that unlocked the potential."

It's through this venture that Steve is a driving force as project manager of Project Encore, a Heritage Fund initiative to revitalize the 135-year-old Crump Theatre — the state's oldest known still in operation — as a performing arts center downtown.

**I DIDN'T REALIZE  
IT'S NOT LIKE  
THIS EVERYWHERE.  
COLUMBUS  
WAS IT.**



Steve envisions it as a draw for touring and local live performances and events, both to the renovated space and Columbus in general.

"We're getting to do something that will have a big impact on downtown, something that exists today and something that will be here tomorrow. At my core I'm a creative problem-solver, so to me that's really fun."

Take the argument there's nothing to do in Columbus.

For Steve, "that's a solvable problem, so let's solve it. The foundation has been laid. I truly feel like there is so much momentum right now and a catalyst for good things to happen. People are talking more, so collectively let's do things better."

**You dig a layer down in anything cool that  
has happened in this town and at some point  
Heritage Fund helped make it happen.**

Then there's what he characterizes as timid post-pandemic growth downtown.

"The game has changed. We need downtown to be attractive enough. Investors try and draw people downtown, but that can only go so far. Users have to use it. It's great things have been done, but breaking out of this plateau — we have to do it. It's too good of a town to not try and make it better."

The community foundation can play a role.

"Heritage Fund, in a positive light, is an enabler. If Heritage Fund finds out about it, they can help you get going. It's an organization enough people in the community trust. It's a knowledge base as much as it is an organization. People investing in Heritage Fund want good things to happen. You dig a layer down in anything cool that has happened in this town and at some point Heritage Fund helped make it happen."



# Ashley Caceres

Su Casa

Ashley Caceres was originally a student of architecture. But today she's ended up building plenty of something else — community connections.

The Seymour resident started working in the nonprofit sector about five years ago with United Way of Jackson County and the local Su Casa's expansion into the area. That connection led to her becoming Su Casa's executive director in 2023.

**Growing up I was always connected in my community. It established my values of how people stay connected and love one another.**

"Growing up I was always connected in my community. It established my values of how people stay connected and love one another. I have a passion for helping people feel empowered in making decisions that affect them and their communities."

Su Casa, established in 1999, works to increase self-sufficiency, health, economic independence, education and ensure Latino families feel safe and belong here.

"We want all Latino families to feel safety and belonging and to advocate in their community."

Hundreds of households seek support from the organization, from access to some of its programs — like the summer METAS camp for youth or translation services — to help navigating others elsewhere.

**THERE'S A  
GENUINE NETWORK,  
A SOLIDARITY  
WITH  
PARTNER  
ORGANIZATIONS.**

**YOU DON'T  
SEE THAT  
EVERYWHERE.**



The nonprofit works to meet needs as they change with demographics. It's the only local family service organization specifically serving Latinos.

Mental health curriculum has been developed recently for Latino teens, and there's focus on providing more support for Haitian families trying to navigate programs and services.

"We always try and make sure we stay on top of what's going in in our community."

Ashley loves being part of helping others. "It's very fulfilling. I'm learning along the way. I get to see the impact that our team has." But they can't do it alone. Ashley loves the collaboration with her fellow nonprofit leaders.

"There's a genuine network, a solidarity with partner organizations. You don't see that everywhere. It's something special about Bartholomew County. I know I can reach out for help."

That network extends to Heritage Fund. Ashley said the community foundation has been vital to the work of Su Casa, and to her personally. Recent grant funding has supported the expansion of programming to the Taylorsville area and Ashley's enrollment in Leadership Bartholomew County.

"I'm so thankful. It really helped me feel connected. We're a small nonprofit. Local dollars being invested into our community is very impactful. It's an entity that trusts in the work we do. We trust in this organization. That's so special."

# Daniel Martinez

Indiana University

Daniel Martinez was immersed in the academia of architecture in 2018, writing and researching in Brooklyn but considering something new — maybe a move back to Florida where he grew up.

“I’d been looking for the right time — an opportunity — a sign,” he laughed from his office looking out on Second Street.

That sign came via Indiana. It was at that same time Indiana University was ready to finally launch its master’s-level architecture program. And where better than in Columbus?

Daniel is program director of the university’s J. Irwin Miller Architecture Program, housed inside the former Republic Building, itself one of the city’s seven prestigious buildings on the National Register of Historic Landmarks — a big bonus for architecture students.

“There were a lot of forces in the right place at the right time, rethinking what the architectural legacy ought to be here. I think things are really special here. The juxtaposition of this unexpected context for such significant works.”

He and partner Lulu Loquidis made the move here, eventually starting their LAA Office design studio that “explores the territory between landscape, art, and architecture.” Daniel is also director of Graduate Studies and assistant professor of architecture with the three-year recently accredited Miller program, touted for its unique approach that links architecture training with studio art practice.

Daniel remembers reading an interview where program namesake and legendary architecture champion J.I. Miller discussed how the effects of actions today are felt years into the future.



## AS COLUMBUS THINKS ABOUT ITS OWN GROWTH AND FUTURE, HOW CAN WE PLAY INTO THAT?

It’s interesting for Daniel to contemplate here. “As Columbus thinks about its own growth and future, how can we play into that?” The architecture program, touted for its multidisciplinary approach, provides students opportunities to partner with the city through urban initiatives. The school is also home to Miller M. Arch Gallery.

Daniel originally was a philosophy student. But after befriending architects, he realized the draw of architecture and how it straddles many disciplines like philosophy, history and fine arts. He helps students to view it through different creative lenses.

“It’s a valuable experience as part of the educational process.”

The school’s location in the former newspaper building is also a valuable lesson for students in looking toward the future. “As buildings age — the new uses — how do they speak to a new audience and how does the program play a role?”

Partnerships are vital to the program — and to Daniel and Lulu personally. “We’ve found a really amazing community of friends. The ability to forge your own way — we have come to appreciate the opportunities that come from being in Columbus.”

## The ability to forge your own way — we have come to appreciate the opportunities that come from being in Columbus.

Including those helped by Heritage Fund. “Providing resources that are a vital part of creatives in a community, bringing ideas to the table — it’s a lifelong creative process and the different organizations involved — we love that.”

Recent Heritage Fund grant funds benefited the Community Design-Build Program, the first of which saw students designing a prototype bus shelter for the ColumBUS transit system. Supporting architecture supports how it connects to the city — and the world — through the IU program and its connections.

“Heritage Fund is immensely needed to support the needs of nonprofits and supporting creatives and the arts. It means a lot, getting to know more about a community organization that has philanthropically been a supporter of community needs — it’s the bloodline of a community.”



# Intermission

## Financials

Total Assets

\$111,200,000

Total Gifts Received

\$6,958,814

Investment Returns

13.7%

Operating Income

\$1,271,512

Operating Expenses

\$1,085,276

Total Grants

\$6,687,949

Unrestricted Grants

\$783,240

Restricted Grants

\$5,904,709

Total Scholarships

\$865,435

Heritage Fund Scholarships

\$777,435

Lilly Endowment Community Scholarships

\$88,000

**Unrestricted Grants** Made from Community Fund at discretion of Heritage Fund Board of Directors with input from community advisers

**Restricted Grants** Made at recommendation of donors



# Act III, Scene I

## INSPIRE – Scholarships

Students are our rising stars. Heritage Fund scholarships help set the stage for their successful future. Close to 100 unique funds comprise our scholarship program that awards thousands of dollars to support students' academic endeavors and provide a powerful way for donors to make a difference.

In addition to our general scholarship program, we also annually administer the Lilly Endowment Community Scholarship program for Bartholomew County and our annual Brown Music Competition for high school musicians.

**252** Students Receiving Scholarships

**98** Unique Scholarship Funds

**\$865,435** Scholarship Award Dollars

Spotlight

## Jasmine Yang

2024 Brown Music Competition Winner

The Columbus North graduate was our senior winner of the Betty F. Brown Awards for Instrumental Excellence and is attending Indiana University, majoring in psychology. As a music minor, she has started taking some music courses and brought her guitar and piano music along to Bloomington and takes advantage of opportunities to practice and play. Jasmine's \$3,500 scholarship award was thanks to the Brown family's long tradition of supporting the talents of student musicians through the annual competition for high school instrumentalists and vocalists.



What did being a Brown Competition winner mean to you?

Being one of the competition winners meant a tremendous amount to me. Going against my fellow seniors last year was not an easy task, since we're a large group of talented musicians. I was incredibly honored to be named the first-place winner of the Brown Instrumental Competition. It was a happy accomplishment to share with my teacher, family, and friends.

Why is having a local competition like the Brown important to young musicians?

It allows musicians in Columbus to be connected for one morning and share their talent with the local community. Along with that, it's a great way to honor the Brown family and provide opportunities specific to musicians in Columbus to win scholarships to help foster musician growth. I am extremely grateful to have had the opportunity to compete because it challenged me and allowed me to connect to fellow musicians in Columbus that I would have not otherwise been able to meet.



# Act III, Scene II

## INSPIRE – New Funds

Every fund at Heritage Fund plays a starring role in the work of the community foundation. We are honored to partner with our donors to help produce their dreams of personal philanthropy. We proudly recognize new funds established in 2024:

### Spotlight

#### First Presbyterian Church Bicentennial Legacy Fund

In commemoration of its bicentennial in 2024, First Presbyterian Church established its Bicentennial Legacy Fund in partnership with Lincoln-Central Neighborhood Family Center as a way to support its neighbors and invest in the future. The First Presbyterian Bicentennial Legacy Fund supports church members' belief that helping others to become self-sufficient and achieve their potential invests in the future while giving back to the community. While grants administered by LCNFC may be modest, they offer much-needed assistance to residents that can make all the difference.



"The FPC Bicentennial Legacy Fund is a concrete and lasting way in which First Presbyterian Church can partner with Lincoln-Central Neighborhood Family Center to invest in our neighbors in times when supporting them can make the difference towards sustaining their financial independence," Rev. Dr. Felipe Martinez shared. "FPC hopes our neighbors will feel the love and trust of the community when the Bicentennial Legacy Fund offers them a hand-up."

Diane Doup, LCNFC community outreach coordinator, can attest that they have. "The First Presbyterian Bicentennial Fund is enabling Lincoln-Central Neighborhood Family Center to fulfill the church's vision of giving a hand-up to individuals and families who are striving to maintain self-sufficiency. LCNFC has long believed in helping those who are helping themselves. By easily removing barriers for people who are already facing stressful situations, it gives recipients hope and demonstrates that this is a community that cares. These endowed funds give LCNFC the comfort of knowing we can meet these needs for years to come," Diane said.

Just some of the ways the fund has helped:

A woman needed 24-hour care, but her husband was trying to maintain his job and very important health insurance that would eventually kick in to provide funds for a caregiver. He was brought to tears because these funds helped pay for a caregiver until that coverage through his workplace could start.

A man needed his house cleaned before he could return home after surgery. Funds were used to hire someone who needed Christmas money to clean his house. Two households helped with one gift!

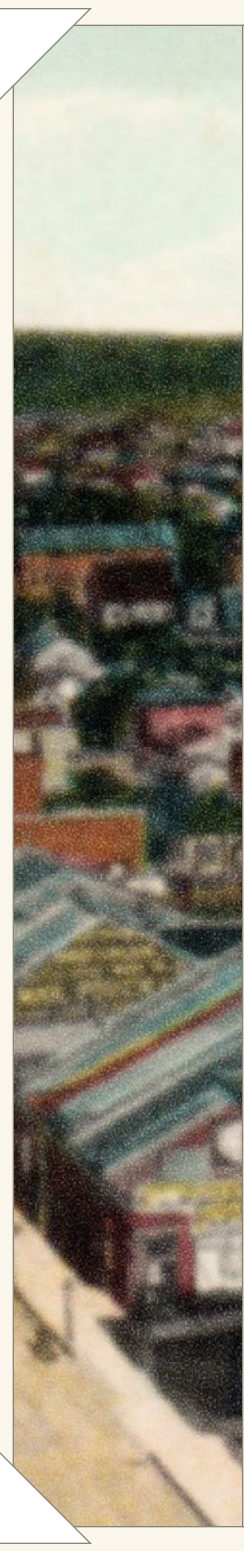
LCNFC partnered with VIMCare for a wife who used her housing funds to put tires on the vehicle which transports her husband to chemo and dialysis in Indianapolis.

Funds raised by the church community exceeded more than \$200,000 and were matched by an additional \$100,000 as part of Lilly Endowment's Giving Indiana Funds for Tomorrow (GIFT) VIII program with community foundations.

"Heritage Fund has been a great philanthropic partner with FPC as we envisioned and implemented our plan, especially when Heritage Fund helped us amplify our efforts by securing a generous Lilly matching grant which Lincoln-Central Neighborhood Family Center is being able to direct to our neighbors," Felipe said.

"Those of us on our church's Bicentennial Committee were gratified with the outpouring of gifts and support for our Legacy Fund Project. Working with our friends at Lincoln-Central Neighborhood Family Center and Heritage Fund to set up administration and to launch this project has given us the perfect 'dream team,'" shared Sherry Stark, co-chair of the FPC bicentennial committee.





## The Mike Spencer Memorial Scholarship Fund

Scholarship fund established by the family of Mike Spencer to honor his memory. Scholarships will benefit seniors from Columbus East High School of Hispanic / Latino descent who plan to pursue a bachelor's degree in a STEM-related field.

*I hope that more students of Latin descent can access higher education and, in turn, support those who come after them. — Graciela Spencer*

## Columbus Fellowship Club

Agency fund established to provide support for nonprofit Columbus Fellowship Club that offers 35 different weekly meetings for individuals seeking substance abuse recovery through 12-step programs such as Alcoholics Anonymous, Narcotics Anonymous, Alateen, Al-Anon, Nar-Anon and Adult Children of Alcoholics since its establishment in 1981.

## The Umphress Family Fund

Donor advised / personal foundation fund established by the Umphress Family to fulfill their charitable intentions.

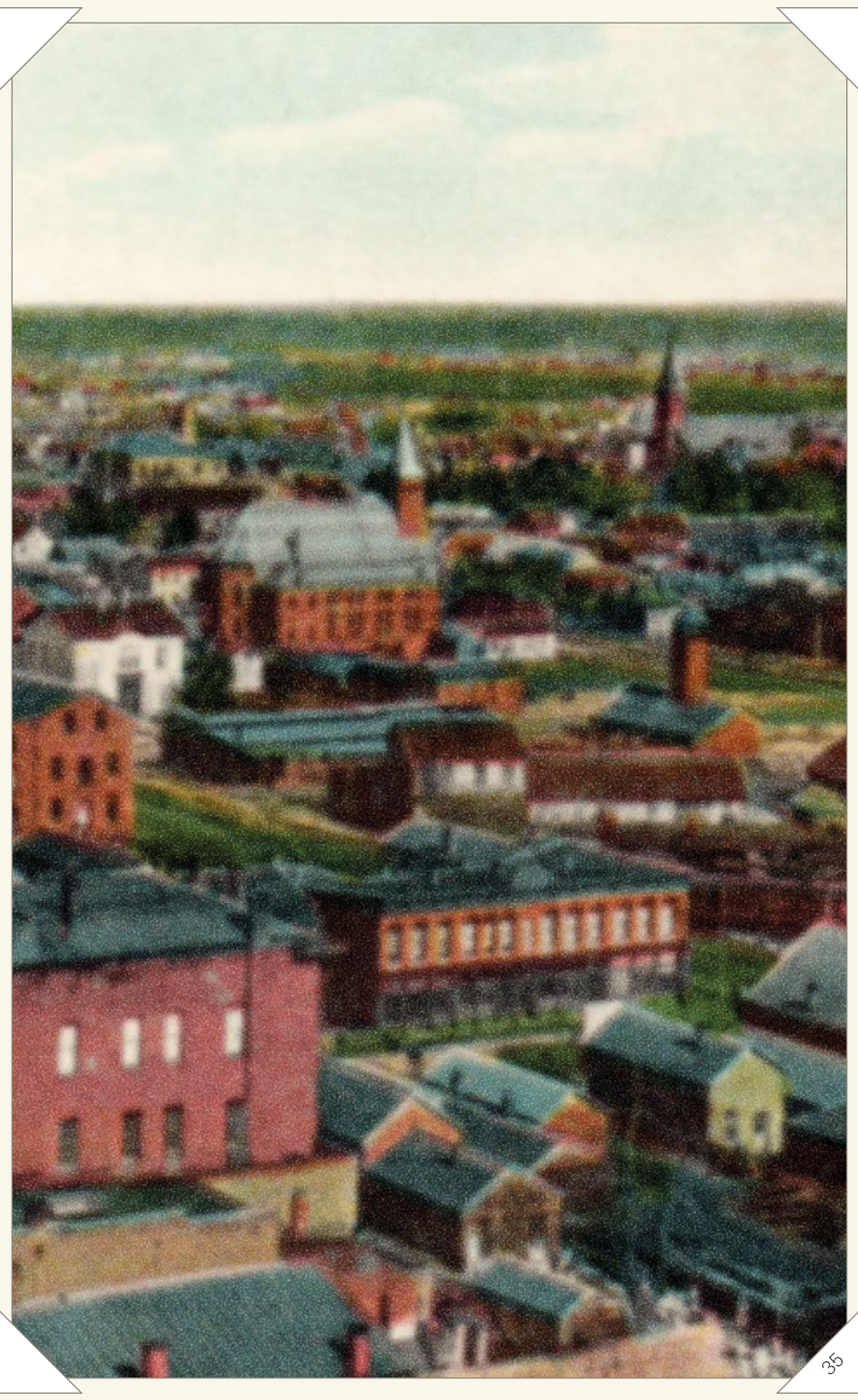
## South Asian Foundation of Bartholomew County Fund

Field of interest fund established to foster a thriving South Asian community in Bartholomew County by supporting cultural, health and educational initiatives.

*In addition to supporting cultural, health, education, leadership development, and entrepreneurial initiatives, I hope the fund will also back the county's Welcoming Community initiatives and contribute to other appropriate areas. Heritage Fund is deeply committed to its cause and is all about making a positive impact. This is something we also aspire through the fund and have found the right partner to work with. — Anuja Mazgaonkar*

## Sandi's Closet Fund

Agency fund established by Jill Tasker to support nonprofit organization Sandi's Closet, which provides free shopping experiences for people living with dementia. "Pop-up" shops at memory care, assisted living and adult day care facilities, as well as community events, provide opportunities to experience the joy of a shopping event.





# Epilogue

Take a Bow, Tracy

Leader.  
Collaborator.  
Mentor.  
Friend.

Tracy Souza has played many roles during her time with Heritage Fund.

In June of this year she will be retiring after 14 years as president and CEO of the community foundation.

We celebrate the countless contributions she's made to the Columbus community during her career and wish her only the best in her next act.



## Community Cheers

### **ALICE JOHNSON**

Tracy's commitment and dedication to the Columbus community was so evident in the wonderful work she did as president and CEO of Heritage Fund. It was a pleasure to work so closely with her as chair of the HFBC board. Best wishes to Tracy for a very happy and fulfilling retirement!

### **TOM VUJOVICH**

I have had the pleasure of knowing Tracy for about 40 years. Through good times and bad, happy times and sad she displays an unwavering attitude of enthusiasm and joy. Her good cheer, even during adversity makes her someone who it is fun to be around. Tracy cares about all those around her. From family to staff, community to corporate leadership she shows the same level of commitment and professionalism. Her imprint is on almost all of the major accomplishments of our community. If you want something done, call Tracy.

### **MICKY KIM**

Tracy's passion for and dedication to Heritage Fund and our community was an inspiration and positive example to many.

### **RICHARD MCCOY**

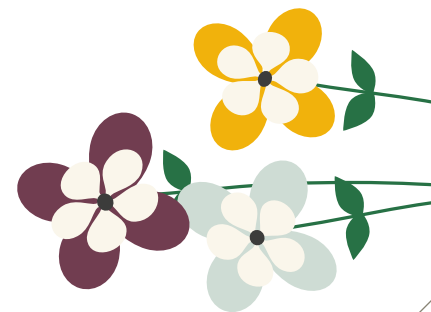
Tracy Souza is a mentor, friend, and person who has been unapologetic at kicking my butt when I do something she doesn't like. She's tough, thoughtful, caring, opinionated, and committed to improving people's lives so directly that I'm often left in awe, and occasionally sore. We will be enjoying the impact she has created in this county and around the state for a long time. I hope she still stops by our office occasionally to tell us what we're doing perfectly or, uh, not so perfectly!

### **SARLA KALSI**

Tracy has been a pillar in this community for so many years that it is difficult to imagine our community without her. Tracy's efforts to make Bartholomew County a welcoming community for all that offers opportunities to live, work and play have made it the wonderful place we all call home. Under Tracy's leadership, Heritage Fund's assets under management have grown from \$50 million to \$111 million, and Heritage Fund is at the forefront of every major community initiative. We will miss Tracy. We wish her all the best in retirement.

### **LYNNE MAGUIRE**

Tracy in every way has exemplified the values we embrace at Heritage Fund and in the community. In her time leading Heritage Fund, she has furthered Heritage Fund's growth into a visionary foundation that leverages our strengths and seeks to make Columbus a great community for all. She has high aspirations for herself and for Heritage Fund and has worked hard to make Heritage Fund a positive and visionary organization in the community. She has been a strong voice for those who need an advocate and whose voices are perhaps not being heard. She understands that our architecture is a physical representation of our community values and is not just part of our legacy, but also a bridge to future excellence. She has been a collaborator and partner with so many other sectors in the community — the arts, social services, healthcare, economic development, education and government to name a few. She shows others that collaboration is the way to greater impact. Tracy is a person of great integrity and she leads selflessly. We were lucky to have her leadership and will miss her courage, tenacity, intelligence and grace!



# Crew

## Board & Staff

2025 Board of Directors

**Lori Thompson** ..... Chair

**Michelle Schaefer** ..... Vice Chair

**Phil Luzius** ..... Secretary

**Maggie Kamman** ..... Treasurer

**Tracy H. Souza** ..... President & CEO

**Steve Baker**

**Jeff Brown**

**Brad Davis**

**Johnnie Edwards**

**Mary Ferdon**

**Katie Glick**

**Tracy Haddad**

**Thomas Harmon**

**Reinhold Hill**

**Sarla Kalsi**

**Carl Lienhoop**

**Anuja Mazgaonkar**

**Courtney Metzger**

**Lora Mount**

**Chad Phillips**

**Aida Ramirez**

**Jim Roberts**

**Nicholas Sprague**

**Mark Stewart**

**John Whittington**

**Jeff Wiltrout**

**Mandy Wyant**

## STAFF

**Tracy Souza** ..... PRESIDENT & CEO

**Kristin Munn** ..... VP OF OPERATIONS AND DEVELOPMENT

**Amy Laker** ..... COMMUNICATIONS DIRECTOR

**Stephanie Seaborne** ..... FINANCE DIRECTOR

**Laura Garrett** ..... DIRECTOR OF COMMUNITY IMPACT

**Katy Bush** ..... SCHOLARSHIP DIRECTOR

**Jill Swain** ..... OFFICE OPERATIONS MANAGER

**Jeanette Marsh** ..... ACCOUNTING MANAGER

**Moon** ..... OFFICE CO-ORGI-NATOR







#### **DONATIONS**

Heritage Fund  
P.O. Box 1547  
Columbus Indiana  
47202

[heritagefundbc.org](http://heritagefundbc.org)

# 2024

## Listings

## ADMINISTRATIVE ENDOWMENT FUND

An administrative endowment fund was established in 2006 by Heritage Fund's Board of Directors. Gifts to this fund ensure that the foundation will continue to provide service to the community forever. Gifts of any size are welcome; gifts of \$5,000 or more create a named fund. We thank these generous donors who understood the power of endowment, ensuring long-term sustainability for the administration of Heritage Fund.

### Visionaries

Daniel Family  
in memory of Ann Daniel  
First Financial Bank  
Aileen Marshall Graham  
Mr. and Mrs. David Kirr  
Lynne Maguire and Will Miller  
Estate of Frances C. Olinger  
Helen Rowell Trust  
Tom & Tina Vujovich

### Leaders

Dan & Robin Daniel  
Rick & Alice Johnson  
NTN Driveshaft, Inc.  
Nobuo Satoh  
Matt and Tracy Souza

### Stewards

Dr. and Mrs. R. Todd Bergman  
Delmar E. Demaree, III  
John and Louise Dorenbusch  
Kirby Risk Corporation  
Randy and Jill Scheidt  
Sharon Risk Stark  
Suzanne Tannenbaum

## NAMED FUNDS WITHIN THE COMMUNITY FUND

Unrestricted funds provide flexibility to respond to the broad and changing needs in the community, now and in the future. Income from these commingled funds is granted to not-for-profit organizations to address quality of life issues in Bartholomew County. Gifts of any size are welcome; gifts of \$5,000 or more create a named Community Fund.

Dr. David L. & Mrs. Mary Jane Adler	Dorel Juvenile Group Fund
Eugene & Rosemary Anderson Fund	Mr. & Mrs. John F. Dorenbusch Fund
Kathryn Anthony Fund	David & Wilma Doup Family
Arvin Fund	Endowment Fund
Mr. & Mrs. James K. Baker Fund	Mr. & Mrs. George Doup Fund
Jim & Joan Bickel Fund	Mr. & Mrs. Perry Doup Fund
Thomas C. & Carol Lynn Bigley Fund	Mr. & Mrs. Jerald B. Dunlap Fund
Mr. & Mrs. William C. Bobbs Fund	Mr. Kenneth O. Dunn Fund
Mr. & Mrs. C. Raymond Boll Fund	Dr. & Mrs. Herman Echsner Fund
Brands, Inc. Fund	Mr. & Mrs. Norman R. Edwards,
Betty L. Brand Fund	in memory of Leonard O. Edwards Fund
Mr. & Mrs. W. Calvert Brand Fund	John P. & Ann S. Ellis Fund
Breeden Inc. Fund	John & Amber Elwood Fund
Mr. & Mrs. Rex E. Breeden Fund	Mark & Wendy Elwood Fund
Jeff & Lynn Brown Family Fund	Enkei America Inc. Fund
Mr. & Mrs. Robert N. Brown Fund	Lewis N. & Lorene G. Essex Fund
Robert N. Brown Fund	Mr. & Mrs. Philip R. Essex Fund
Dr. & Mrs. W. George Brueggemann Fund	L.K. & Margaret A. Evans Fund
William & Loretta Burd Fund	Faurecia Fund
David R. Burt Legacy Fund	First Financial Bank Fund
Mr. & Mrs. R. Benjamin Bush Fund	First National Bank of Columbus Fund
William N. Carter Memorial Fund	David L. & Janice J. Fisher Fund
Century 21 Breeden Realtors Fund	Donald V. Force Memorial Fund
Columbus Bank & Trust Company Fund	Dr. & Mrs. R. E. Fortner Fund
Ross G. & Pauline D. Crump Fund	Aileen Marshall Graham Fund
Custer Foundation Fund	Mr. & Mrs. Robert A. Grant,
Dan & Robin Daniel Family Fund	in memory of Mabel P. Grant Fund
Mr. & Mrs. William K. Daniel Fund	A.W. & Lucile Habermeyer Fund
Elizabeth K. Deer & Randolph H. Deer Fund	Mr. & Mrs. John T. Hackett fund
Randolph H. Deer Fund	Mr. & Mrs. Robert W. Haddad Fund
Ken & Phyllis DeLap Fund	Mr. Clarence O. Hamilton Fund
Mr. & Mrs. Marion C. Dietrich Fund	Lee & Nancy Hamilton Fund
William H. Donner Memorial Fund	Mr. & Mrs. William S. Hamilton Fund



## NAMED FUNDS WITHIN THE COMMUNITY FUND

Mr. & Mrs. Waldo M. Harrison Fund	Will Miller & Lynne Maguire Fund
Don & Dody Harvey Fund	In Honor of J. Irwin Miller Fund
Thomas W. & Judith M. Head Fund	Dr. & Mrs. Donald C. Moore Fund
The Honorable Stephan R. Heimann Fund	Anthony Moravec Family Fund
Mr. & Mrs. James A. Henderson Fund	Julia Morris Memorial Fund
Barbara & Thomas Hennig Fund	The Namaste Fund
Dr. Alvin & Lucy Henry Fund	Mr. & Mrs. John A. Nash Fund
Mr. & Mrs. Thomas J. Hinshaw Fund	Ralph & Anne E. Newman Fund
Robert E. Hoffmeister Memorial Fund	Marjorie W. Newton Philanthropic Fund
Mr. & Mrs. Robert E. Hoffmeister Fund	F.M. Overstreet Memorial Fund
Barbara & Herbert Hoover Fund	Virgil & Vangie Parker Fund
Bill & Nancy Hunt Fund	Pawny Foundation Fund
Irwin Union Bank & Trust Company Fund	Howard & Joan Percy Fund
Joseph C. & Marilyn M. Jerman Fund	Fred & Karen Reams Fund
Johnson Family Fund	Dr. & Mrs. Robert G. Reed Fund
Mr. & Mrs. Richard L. Johnson Fund	Mrs. Mildred A. Reeves Fund
Mr. & Mrs. David Jones Fund	Reliance Electric Company Fund
Mr. & Mrs. Harold V. Jones, Jr. Fund	Mr. & Mrs. Willis A. Repp Fund
Mr. & Mrs. D.W. Jurgemeyer Fund	The Republic Fund
John & Nan Keach Fund	John & Lis Revell Fund
Mrs. Lucille L. Keller Fund	The Bill & Nan Russell Community Fund
Carl H. & Charlotte L. Kiel Fund	Adrienne E. Savage Fund
Mr. & Mrs. Arthur D. King Fund	Mr. & Mrs. Henry B. Schacht Fund
Harry & Jane Kinney Fund	Randy & Jill Scheidt Fund
David M. & Barbara A. Kirr Fund	Albert H. Schumaker Fund
Kroot Corporation Fund	The Hutch Schumaker Family Fund
Dr. & Mrs. Peter H. Leonard Fund	Mr. & Mrs. William D. Schwab Fund
Mark & Marabeth Levett Fund	SIHO Insurance Services Community
John & Mindy Lewis Family Fund	Endowment Fund
Howard W. & Carolyn A. Lickerman Fund	Mr. & Mrs. James E. Shipp
Jim & Pam Lienhoop Fund	Albert D. Silva Memorial Fund
Lilly Endowment Fund	Smith & Syberg, Inc. Fund
Joe & Deborah Loughrey Fund	Mr. & Mrs. Richard L. Snider Fund
Mr. & Mrs. Robert W. Mahan Fund	Mr. & Mrs. W. Patrick Snyder Fund
Terry B. & Constance L. Marbach Fund	Solso Family Fund
Estate of John C. Marshall Fund	Mr. & Mrs. John S. Spangler Fund
John C. & Aileen N. Marshall Fund	Mr. & Mrs. Norbert L. Sprouse Fund
Elaine & Ted Marston Fund	Sharon Risk Stark Fund
Dick & Donnette McGee Fund	Margaret J. Stevenson Fund
Meshberger Family Memorial Fund	Meriam P. Stonecipher Fund
Kevin & Lorrie Meyer Fund	Mr. & Mrs. Richard B. Stoner Fund
Martha L. Middleton Fund	Gregg & Judy Summerville Fund

Mr. & Mrs. Frank E. Suverkrup Fund  
In honor of Ella & Franklin Swain Fund  
Mr. & Mrs. Franklin Swain Fund  
E. Don & Joyce Tull Fund  
Larry I. & Nancy E. Van Epps Fund  
Tom & Christine Vujovich Fund  
Dr. & Mrs. Daly Walker Fund  
Mr. & Mrs. Michael H. Walsh Fund  
Mr. & Mrs. Patrick J. Ward Fund  
Charles H. & Rosanne N. Watson Fund  
Ro & Shorty Whittington Fund  
John & Geneva Wickens Fund  
Tom & Celeste Yonushonis Fund

George W. & Glowdine E. Budd Memorial Fund  
A fund established by generous donors  
which designates fund distributions to support  
the Heritage Fund Community Fund.

## DONOR LIST

Aaron & Tonya Quinton	Angelina Rodriguez
Aaron Quinton	Angie Michiko Kirkham
Abby Smith	Anita Bannister
Abdulah Frazier-Bey	Anita L. Hole
Abigail Bushur	Ann & Bill Jones
Accenture	Ann Bumb
Adam Scheidt	Ann Davis
African American Pastors Alliance	Ann Hedrick
Agresta, Storms & O'Leary, PC	Ann* Knobloch
Aida Ramirez	Anna Denoyer
AIM Media Operating Indiana, LLC	Anne E. McLaren
Aimee Lynn Morris	Annette Bottum
Aisin World Corp of America	Annette Deaton
Al & Ingrid Askerberg	Anonymous Donor
Alagappan Ramasamy	Anthony P. & Gail F. Plattner
Amanda Baker	Anuja & Uday Mazgaonkar
Amber Fischvogt	Anuja Mazgaonkar
Amelia Anne Huntington	Aparna Venkatraman
Amelia Maddox	Arcadia Publishing, Inc.
Amy Blackwell & Dean Schertz	Ashley Acton
Amy Craft	Ashley DeHart
Amy Hamilton	Ashley Toler
Amy Hirtzel	Astrid Zusetette Davila
Amy Layman	Aton's Self Storage LLC
Amy McCormick	Avril & Todd Schutte
Amy Wetherald	Avril Schutte
Ana Selbach	Barbara Millis
Analytical Engineering, Inc.	Barbara Reckers
Andrea Butler Koontz	Bar-Cons Federal Credit Union
Andrew & Melinda Hunnicutt	Barkes, Weaver and Glick
Andrew & Sarah Speer	Funeral Homes, Inc.
Andrew and Mona Dale	Bartholomew County Historical Society
Andy Critzer Memorial Golf Tournament	Bartholomew County Public Library

Bartholomew County REMC	Brian & Patty Hannasch
Beatriz Betancourt	Brian Arnholt
Beatty Insurance, Inc.	Brian Mormino
Beau Bartels	Brian Wilson
Beck Rocker & Habig, PC	Brittany Mariah Mahoney
Becky & Jim Jones	Broadwing Legal
Becky Linville	Brooke A Chowning -Loy
Becky Merritt	Brooke Hawkins
Becky Reese	Bryan & Michelle Schaefer
Ben & Laura Miller	Buck & Carolyn Imlay
Benjamin & Katina Tooley	C Frank & Nancy Butler
Beth McNeely	Caleb & Stephanie Wolff
BetterWorld	Campbell's Auto Service Inc.
Bill & Bambi Sasse	Capri & James Yrineo
Bill & Carol Batten	Carl & Kim Lienhoop
Bill & Marilyn Martin	Carl and Mildred Reeves Foundation, Inc
Bill & Nan Russell	Carly Blevins
Bing Yang	Carol Phillips Wright & Randolph Wright
Blake Turnbow	Carolina Supply Inc
Bloomerang LLC	Carolyn & John Mulloy
Blue & Co., LLC	Carrie Riley
Blue & Co., LLC	CASH
Bob & Mary Orben	Catalaunch LLC dba Patonicity
Bob & Sue Fisco	Catherine Simmons
Bob Orben	Cathy & Greg Woodworth
Bobbie Mullins	Celeste Yonushonis
Bowl CBC Inc.	Centra Credit Union
Boyer Machine & Tool Co., Inc.	Central Sheet Metal Co., Inc.
BPOE #521 Bingo Account	Century 21 Breeden Realtors
Brad & Carol DeCamp	Cera Sports Corporation – Ceraland Park
Brad & Julie Davis	Chad & Nichole Phillips
Brad & Lacretria Ulery	Chad Storm
Brad Davis	Charles & Betty Nolting
Brad Stinebring & Amy Boerger	Charles & Elaine Hoefflin
Brandy Ramsey	Charles & Lorraine Smith Sr,
Breeden Commercial LLC	Charles & Suzie Rentschler
Brenda Pitts	Charles Robbins
Brent & Becky Church	Charles Vannatta
Brent Lollar	Charlie & Jayne Farber
Brian & Adrienne Mormino	Chelsea Wunder
Brian & Allison Clark	Chip & Julie Orben
Brian & Erin Russell	Chris & Cheryl Wilkins



## DONOR LIST

Chris & Debbie George	Dan & Susan Arnholt
Chris & Shannon Clulow	Daniel & Melissa Vermillion
Chris Price	Daniel & Shawna Netser
Chris Raskob	Daniel Johnson
Christine A Hartsell	Daniel Schroer
Christine Beach	Daniel Thomas Wickliffe
Christy Lee	Danielle Pitzer
Chuck & Carleen Fry	Danny Olson
Chuck & Geri Wilt	Darcy Heyerdahl
Chuck Wells	Darlene & Steve Bricker
Cinthia Smith	Darlene Carter – West
City of Bloomington	Darrell & Nichristin Guesman
City of Columbus	Darren & Cheryl Buffo
Clarence & Inez Custer Foundation	Darren Wright
Cline, King & King, P.C.	Dave & Janice Fisher
Clint & Laura Garrett	David & Angie May
Coca-Cola Bottling Company, Inc.	David & Charlene Bosley
Columbus Animal Hospital, P.C.	David & Denise Rau
Columbus Area Chamber of Commerce	David & Katherine Connor
Columbus Area Visitors Center	David & Lisa Webster
Columbus Capital Foundation	David & Michelle Emmert
Columbus Crump LLC	David & Sharon Larson
Columbus Culture Club	David & Wilma Doup
Columbus Fellowship Club	David and Claudette Hayward
Columbus Regional Health	David Broderick Behrman
Columbus Regional Health Foundation	David Green
Columbus Running Club	David McGurk
Connie Ray	David Smith
Coriden & Coriden, LLC	Dayspring Church of God Apostolic
Cork Liquors	Deb and Artu Mijangos
Courtney & Heath Metzger	Debbie Combs
Craig & Becky Colburn	Debbie Richardson
Creative Hair Design	Deborah Jones
Cummins Foundation	Debra George
Cummins Inc.	Dennis & Lori Heathfield
Cummins New and ReCon Parts	Derek Whitehead
Curtis Miller	Dexter Hochstetler
Cynthia Chapman	Diana L. Mann
Cynthia Dunlevy	Diane Cantrell
Cynthia Finkel	Diane Doup
Cynthia Scott	Diane Gerstle Dobbins
Dale & Linda Guse	Diane Spofford

Dick & Bambi Wigh	Edward P. Kriz
Dick & Leigh Oney	Elaine & Jordan Hilber
Dody & Don Harvey	Elise Dutreil
Don & Diane Meier	Elizabeth Morris
Don & Diane Michael	Elizabeth R Kirkpatrick
Don & Peggy Wampler	Elizabeth R. Nugent Foundation
Don & Shirley Trapp	Elks Lodge #521
Don Nissen	Ellen Burns
Donald & Natasha Purtlebaugh	Ellen M. Brunner
Donald E. & Roseann Simmons	Emily Nunemaker
Donald Graham	Emma Jensen
Donna & Steve Rosenberg	Engelstad Wealth Advisors, Inc.
Donna Brauning	Eric Stark
Donna J. Stanley	Ethel Stillabower
Donna K Richard	Experience Technology
Dortha Anderson	Faith Hope & Love C.O.G.I.C.
Doug & Becky Bell	Family Chiropractic & Wellness LLC
Doug and Karen Broad	Felicia Garr
Doug Stender & Jill Tasker	First Financial Bank
Dr. David & Mrs. Kelli Thompson	First Lutheran Church
Dr. David Hamilton & Dr. Sheryl Elston	First Presbyterian Church
Dr. Ed & Mrs. Pat Probst	Floyd & Cindy Rutan
Dr. Ilya Schwartzman	Force Construction Company, Inc.
Dr. Jim Roberts	Fran Herbert
Dr. Keith Bean	Frank Wadsworth
Dr. Kelley L. Deak	Fraternal Order of Eagles Bartholomew
Dr. Kevin Preuss & Ms. Lisa Duret	Aerie No. 741
Dr. Linsong Guo	Frederick Bloss & Colieta Browning Bloss
Dr. Mandy Wyant	Frederick Sauer & Elizabeth Lopez
Dr. Reinhold Hill	Future Tool & Engr. Co. Inc.
Dr. Rolf Loescher & Dr. Donnamarie Darcy-Loescher	Gary & Angela Parker
Dr. Rose M. Mays	Gary & Beth Ann Dismore
Duke Energy Indiana, LLC	Gary & Kristy Gron
Dunlap	Gather Columbus
Early Learning Indiana	Gelfius Farms Inc.
Ed & Jessica Vogel	George & Sharon Gratz
Ed & Kimberly Pence	George Utz, Inc.
Ed & Retha Claypool	Geralyn Ann Handley
Ed Booth	German American Bank
Eddie Sayers	Gerry Lauderbaugh
Edward & Vivian Eckerly	Gigabitnow Indiana
	Gina Clapper

## DONOR LIST

Gina Pleak	James & Peggy Voelz
Grace Kestler	James & Veronica Shipp
Graciela Spencer	James Coffman
Grammer Industries, Inc.	Jamie L. Kleinhenz
Greg & Camille Willmore	Jan Forbes
Greg & Peggy Scherschel	Jan Lucas
Gregg & Judy Summerville	Jane Switzer Daniel
Gregory & Nancy Lewis	Jane Unsworth
Hannah Caudill	Janet Ward
Harrison Center for Arts, Inc.	Janne Robbins
Hawcreek Flat Rock Area Endowment	Jarod Buchta
Hawpatch Fish & Game Club	Jasmine Buehler
Heidi Mackos	Jason & Stephani Hoy
Herbert & Margie Boilanger	Jason & Tanya Ely
Hitchcock Design Group	Jayne Farber
Honorable Kathleen Coriden	Jayson Sterling
Hope Ladies Care Club	JCBank
Hope Lions Club	Jean & Ethel Sneed
Hope Veterinary Clinic	Jean Hashman
Horizon Bank	Jeanette Marsh
Howard Andrews	Jeff & Lynn Brown
Hutch & Kevina Schumaker	Jeff & Nicole Wilttrout
Hutch Schumaker Family Foundation	Jeff Baker & John Pickett
Independent Colleges of Indiana	Jeffery & Karen Willingham
Indiana on Tap , LLC	Jeffery & Nanne Cutler
Irida Miller	Jeffery Gearhart & Pippa Dent
Irwin Financial Foundation Inc.	Jen Morrill
IU Columbus Office of Development	Jennifer Englert-Copeland
Ivy Tech Foundation, Inc	Jennifer Howe
J. Eric Neal	Jenny & John Heichelbech
Jaci McGrew	Jenny Elizabeth DeJarnette
Jack & Lana Scherer	Jenny Hazelgrove
Jacque Douglas	Jerry & Catherine Leister
Jacqueline Powers	Jesse Brand & Geri Handley
Jacqueline Willms	Jessica Renee Deckard
Jacque Franz	Jiadao Huang & Huaying Zhou
Jada C Meyer	Jianguo Wu
Jalene Hahn	Jill Tasker
James & Beverly Tibbetts	Jim & Chris Newkirk
James & Julia Euler	Jim & Jennifer Rumsey
James & Lynette Farless	Jim & Judy Klaus
James & Marcia Lyons	Jim & Mimi Riffle

Jim & Nora Coleman	Justin Thomas Kelley
Jim & Pam Lienhoop	K. Jaisun Hilliard
Jim & Tenza Flowers	Kaitlyn Beckwith
Jim & Toots Henderson	Kaitlyn K
Jim Battin	Kappa Kappa Kappa Inc.
Joan Thompson	Columbus Alpha Associate
Jody Harter	Karen Jones
Joe & Gilda Wettschurack	Karl & Ursel Wolff
Joe & Lisa Lohmeyer	Karlene Kurtz & Ben Snodgrass
Joe & Wendy Kotowski	Kathleen Clouse
John & Amber Elwood	Kathleen M. Paul
John & Arleen Keele	Kathy Covert
John & Beth Stroh	Kathy Giovanini
John & Cari Roberts	Kathy Oren
John & Cindy Smock	Kathy Roemmel
John & Connie Ray	Katie Glick
John & Debbie Burnett	Katy & David Bush
John & Donna Sasse	Keith & Joy Reising
John & Mary Ellen Wyman	Kelly & Sam Geckler
John & Sally Brand	Kelly Baker
John & Sarah Lechleiter	Kelly Higgs
John & Sharon Grace	Ken & Kim VanArsdall
John & Susan Nash	Ken & Nancy Chandler
John Burnett	Kennel Club Of Columbus
John Whittington	Kenneth Jones
Johnnie Edwards	Kenneth O. Dunn
Johnson Ventures	Kenneth Sandrock
Jon & Rhonda Fischer	Kenny Glass Inc.
Jonathan & Natalie Stavnheim	Kerk B. McKeon
Jorck Vern & Barbara Watt Jorck	Kevin & Darla Aker
Jose Ramos	Kevin J Jones
Joseph & Kathleen Sheehy	Kevin Jerome Jones
Joseph Fuehne	kidscommons
Joseph Giacoletto	Kim M. Riche
Joseph Stafford	Kim Powers
Judi Smith	Kim Stover
Judith B. Shepherd	Kirby Risk Corporation
Judith H. Eaton	Kirr Marbach & Company
Juli Johnson	Kiwanis Scholarship Fund
Julie Orben	Kristen Seymore
June Hagan	Kristian Koons
Justin Schneider	Kristie Leonard



## DONOR LIST

Kristin & Jamie Jackson	Margaret Carson
Kristin Marshall	Margaret Herndon
Kristin Munn	Margaret Houston
Kristin Simons	Mariah E. Browning
Kroger	Mariana Petraglia
Kyle Prince	Marilyn Richardson
Kymber L Perkins	Mario De La Torre
Larry Huntington	Mark & Chris Kevitt
Laura Hack	Mark & Linda Pillar
Laurie Counsel	Mark & Marabeth Levett
Lee & Jewell Arthur	Mark & Myra Foster
Leroy & Karen Shirk	Mark & Wendy Elwood
Lesley Bradley	Mark Stewart
Leslie Holder	Marlene Chestnut Turner
Leslie Horton	Martin & Linda Iwamuro
LHP Software, LLC	Martin Overhead Door, Inc.
Lilly Endowment Inc.	Marwa & Danielle Mugasa
Lincoln Center Skate Club	Mary Ann McCray
Linda Chui	Mary Frey
Lisa Eidman	Mary Jane Hooker
Lisa Elkins	Mary Lou Voelker
Lisa Piercefield	Matt & Tobi Herron
Lisa Ross	Matt & Tracy Souza
Live Barn Inc.	Matthew & Laura Dudukovich
Lora Mount	Matthew Kirr
Loretta K. Vinson	Megan Galle
Lori & John Lucas	Megan Larson
Lori Phillips	Megan Roberts
Lori Thompson & Ben Downing	Melissa K Jordan
Lori Wells	Meredith & Sally Thompson
Louis Joyner	Michael & Jennifer Perduto
Louis Meek III	Michael & Pamela Harrell
Loyal Order of Moose Inc.	Michelle Eder
Lucabe Coffee Company	Michelle Hummel
Lucas Brothers Sandwich Shop	Mickey & Jenny Kim
Luciana Ballesteros	Mike & AJ McIver
Luz Elena Michel	Mike & Donna Keogh
Lynn & Janice Montgomery	Mike & Linda Ingram
Macs Convenience Stores, LLC – Circle K	Mike Carson
Maggie & Kyle Kamman	Mike Harris
Malkiat Grewal	Mike Mullett & Patti March
Margaret A. Cummins-Schaefer	Mildred Maier

Milestone Contractors, L. P.	Paul & Shayla Holtkamp
Miller-Meredith Charitable Fund	Paulette Roberts
Milo Smith	Pete & Cathy King
Miss Rachel's Neat Treats	Pete & Pam Tully
MJS ICE, LLC	Peter Kaplanoff & Lois Reed Kaplanoff
Monish & Pooja Jain	Phil Luzius
Mr. and Mrs. Bharat Vedak	Phillip Pryer
Mr. and Mrs. Jonathan Titus	Pia O'Connor
Mr. and Mrs. Richard Gordon	Pradeep Kumar Chillumukuru
Mr. and Mrs. Robert Arterburn	Presbyterian Foundation of Columbus
Mr. and Mrs. Steve A. Spaulding	Pro-Tek Photography, Inc.
Mr. and Mrs. Wayne Hiatt	Prudence Strain-Gamso
Mrs. Joyce Meier	Purdue Alumni Advisory Council
Nancy Conner	Pyramid Custom Packaging
Nancy Morris	Qiang Zhang
National Trust for Historic Preservation	RaiseRight
Ned & Vonda Craft	Raj Maturi
Nic Gong	Ralph Jewell
Nicholas Sprague	Randall Tucker
Nichole, Jeremiah, Barrett & Erin Fletcher	Randy & Jill Scheidt
Nick & Camille McKellips	Randy & Shannon Royer
Nick & Marilyn Firestone	Randy & Sheila Hampton
Nicole Berend	Rashaad Trapp
Nicole McDonald	Red Arch Community Events, Inc
Noblitt Fabricating	Renee Risk Strietelmeier
Norm & Susie Blizard	Repp Associates Foundation
Northside Pediatric Associates PC	Rev. Dr. Felipe Martinez
NTN Driveshaft, Inc.	Rich & Tammy Freeland
Old National Bank	Richard & Alice Gold
Olga Gudino	Richard Belush
Olivia Arts LLC	Richard McCoy
Overhead Door Co. of Columbus	Rick & Alice Johnson
Pamela D. May	Rick & Cindy Colglazier
Pascual Rodriguez	Rick & Jan Sprague
Pat & Ali Crimmins	Rick & Judy Bowman
Pat & Diane Ward	Rick & Kimberly Silvers
Pat & Fee Kelly	Riverside Carpet One
Pat Bush	Ro & Charles Whittington
Patricia D. May	Rob & Trisha Heathcote
Patrick & Barbara Walters	Robert & Gabrielle Ryan
Patrick Sabo & Mary Stroh	Robert & Lynn Cain
Paul & Karen Finke	Robert Enright

## DONOR LIST

Robert Finkel	Southern Roofing, Inc.
Robert Scholtz	Srikanth Padmanabhan & Usha Raghavan
Robin Curry	St. Bartholomew Catholic Parish
Robin Hilber	Stephanie Leotard
Rogelio Reyes	Stephanie Seaborne
Roger & Jan Brinkman	Stephen & Pamela Bayer
Roger & Janet Lang	Steve & Cindy Meyer
Roger Kelso	Steve & Deanna Baker
Ron Nelson	Steve & Donna Brinkman
Ronald & Adele Simmons	Steve & Jeannie Hays
Ronald D. Luther	Steve & Mary Ferdon
Russell & Diana Burton	Steve Jasper
Russell Ross	Steven & Deanne Olson
Ryan & Annette Moravec	Steven Jasper
Ryan & Jean Hou	Su Casa
Ryan George	Sue Lamborn
Sally Scroggham	Sunita M. Hodzen
Sam & Grace Pentzer	Surekha DiOrio
Samantha Steele	Susan & Mike Harrison
Sandra Hall	Susan Heitzman
Sandra McCoy & Betty Haven	Susan Huntington
Sandra Oliverio	Susan Spaulding
Sangram Ajit Bagwe	Suzanne Kimmons
Sarah McClellan	T. H. & Linda Trautman
Sarla Kalsi	Tamara Iorio
Sarla Kalsi	Taylor Bros. Construction Co., Inc.
Scott & Amoret Heise	TD Advertising
Scott & Chris Newlund	Teresa McClanahan
Scott & Lynne Henry	Terry & Constance Marbach
Scott Heise	Terry & Patty Reutell
Scott Mann	The Force Organization
Scott Patrohay	The Kroot Corporation
Scott Tyson Agency Inc.	The Namaste Foundation, Inc.
Shakespeare Club	Theodore M Solso
Sharon Bloch	Theodore Smith
Sharon R Barner	Thomas & Mary Aton
Sharon R. Stark & David A. Tiede	Thomas & Polly Kramer
Sherry Stark	Thomas & Renney Hodek
Shirley A. Lyster	Thomas & Vikki Johnson
SIHO Insurance Services	Thomas and Hedy Kelly
Sondra Bolte	Tiffany Morgan
Sonnie Brock	Tim Bond

Timothy Andrews	WiLLow LeaVes of Hope
Tobi Herron	WWA Planning & Investments
Todd & Mary Noblitt	(Wisdom, Wealth & Abundance, LLC)
Todd & Russanna Hendrickson	Yellow Cardinal Advisory Group
Todd Hendrickson	Yodir & Samantha Anahuati Cacho
Tom & Barbara Schoellkopf	Yoonji Jung
Tom & Celeste Yonushonis	Zachary J. Sutton
Tom & Cheryl Finke	
Tom & Jill Bunger	
Tom & Mary Harmon	
Tom & Sandra Miller	
Tom & Tina Vujovich	
Tom Harmon	
Tom Hinshaw	
Tom Tremain	
Toni Abbott	
Tony & Diana Gambaiani	
Tony & Lynda Gulley	
Town of Nashville	
Toyota Material Handling, USA Inc.	
Tracey Day	
Traci Andresen	
Tracy Haddad	
Tracy Heaton de Martinez	
Tracy Kiser	
Trudi Smith	
Tyla Kelley	
Tyler Rash	
Uchenna Ugeh	
Ursel Wolff	
Veronica Pirie	
Vickie L. Welsh-Huston	
Victoria Kirts	
Vitor Lemos	
Voelz Reed & Mount, LLC	
Warren & Janet Ward	
Wayne & Karen Ripberger	
Whittney Gaines	
Wiley E. & Lisa L.Umphress	
William Miller & Lynne Maguire	
William Wagner	
William Wehmeier	



## FUND LIST

**Donor Advised Funds** Donors recommend not-for-profit institutions for which they have an interest or passion to receive grants; \$15,000 creates a fund.

A. John & Lois Friend Memorial Fund	Summerville Family Fund
Arnett Giving Fund	Tannenbaum Family Charitable Fund
Bartholomew County Organizations	The Umphress Family Fund
Active in Disaster Non-Permanent Fund	The Willmore Community Fund
Bill and Jody Harter Community Fund	Torres Wilczewski Family Fund
Carmen and Eric Retrum Family Fund	Weber Family Donor Advised Fund
Chap & Nancy Blackwell Memorial Fund	Willett Family Fund
Coca-Cola Bottling of Columbus	
Donor Advised Endowment Fund	ADMINISTRATIVE
Columbus Park Foundation –	Helen H. Rowell Trust
Jolie Crider Memorial Fund	Heritage Fund Operating Fund
Conover Stroud Family Fund	Heritage Fund Supporting Organization
Don and Dody Harvey Philanthropic Fund	
Friends of First Christian Church	
Architecture	
Glanton-Perry-Meek Memorial Fund	
Iorio Family Fund	
Irwin Financial Foundation Donor	
Advised Fund	
Irwin-Sweeney-Miller Foundation	
Legacy Advised Fund	
Jeff and Lynn Brown Fund	
John & Nancy Sawin Family Fund	
Louis and Laura Wenzler Fund	
for Strategic Philanthropy	
McGuire Fund for Spinal Cord Injury	
Pia O'Connor Philanthropic Fund	
Psi Iota Xi/Grace Turner Fund	
Robert A. and Mary F. Orben Fund	
Robert N. Brown Fund	
Sarla & Swadesh Kalsi Donor Advised Fund	
Sharon Risk Stark Donor Advised Fund	
Stevens Family Fund	

**Designated Funds** Funds established by generous donors who designate specific not-for-profit institutions that they want to help grow and be sustainable to receive grants; \$15,000 creates a fund.

ABC Stewart Endowment Fund	Edgar & DeLora L. Lauther
A. Dean & Martha E. Taylor Fund	Endowment Fund
Alma Wiley Memorial Scholarship Fund	Family School Partners Designated
Ann Marshall Knobloch Endowment Fund	Endowment Fund
Bartholomew County Library Associates	First Presbyterian Church Bicentennial
Fund (Hooten Family Memorial)	Legacy Fund
Bartholomew County Veterans	Henry, Clara and Alice Weichman
Memorial Foundation Endowed Fund	Bartholomew County Humane Society
BCHS Arvin Legacy Fund	Memorial Fund
Ben & Pat Bush Nursing Fund	Heritage Fund Administrative
in Memory of Edythe & Max Gosnell	Endowment Fund
Betty Welch Musical Fund	In Honor of R.W. Witte & Helen M. Witte
Bill and Sally Hanley Excellence	and Earl V. & Rosalyn R. Hess Fund
in Teaching Award Fund	Judy Huehl Scholtz Memorial Fund
Bill & Norma Perry Memorial Fund	Kyle Carothers Hunt of a Lifetime
Bob and Charlotte Aldenhagen Fund	Memorial Fund
Charles Taylor & Theresa Ann Ross Fund	Landmark Columbus Foundation
Columbus Chinese School	Endowment Fund
Endowment Fund	L. Edward John and Mary Jean John
Columbus Emergency Physicians, Inc. Fund	Endowment Fund
Columbus Park Foundation – Chuck Wilt	Leon Cline Family Fund
Scholarship Endowment Fund	Lilly Scholarship Promotional Fund
Columbus Park Foundation –	Marjorie & Orphie Bridges
John McCormick Scholarship	Philanthropic Fund
Endowment Fund	Martha L. Middleton Mental Health Fund
Community Education Coalition	Mr. & Mrs. Robert F. Reeves
Endowment Fund	Philanthropic Fund
Continuous Outreach Process Fund	Olive Murphy Memorial Hospice Fund
Donald W. Jurgemeyer Endowment Fund (2)	Paths to Success
Donald W. Jurgemeyer Endowment Fund (5)	Peyton's Make-A-Wish Fund sponsored
Donald W. Jurgemeyer Endowment Fund (8)	by Landmark Farm Foundation for the
Dr. & Mrs. William R. Laws, Jr.	benefit of Bartholomew County children
Philanthropic Fund	Raymond and Jane Frede Columbus

## FUND LIST

### Designated Funds cont.

Signature Academy Fund  
Reams Family Award for Excellence  
in Teaching  
Reeves Bartholomew County  
Historical Society Fund  
Reeves Columbus Youth Camp  
Endowment Fund  
Reeves Early Music Education Endowment  
Reeves First Presbyterian Church  
Foundation Fund  
R. Kent Witte, Attorney PC & Stacy Ford  
Walters in Memory of Shannon Ford Fund  
Robert J. Marshall Memorial  
Philanthropic Fund  
Russell and Jean Hashman  
Endowment Fund  
Sharon Risk Stark First Presbyterian  
Church Fund  
Simmons School Fund  
Stadler Brothers Fund  
Sue A. Barton Lincoln Elementary School  
1st Grade Memorial Fund  
The Commons Fund  
The Salin Family Fund  
Tiede Salvation Army Fund  
Turning Point Domestic Violence Services  
Non-Permanent Fund  
William F. and Lisa C. Schultz Fund  
Women Helping Women fbo  
Turning Point Fund  
Woods & Grooms Endowment Fund

**Field of Interest Funds** Donors have the opportunity to respond to the changing needs or charitable interests by personally selecting areas they want to help grow and sustain through grants; \$15,000 creates a fund.

AEI Youth Sports Fund	Mildred A. Reeves Early Education Fund
African American Foundation of Bartholomew County	Next Gen Downtown Fund
Aileen Marshall Graham Children & Youth Endowment Fund	No Child Hungry Endowment Fund
Architectural Revolving Loan Fund	Philip R. Miller Art Purchase Awards Fund
Bartholomew County Bar Association Endowment Fund	Project 46 Fund
Bartholomew Reads Endowment Fund	Schicke Children and Youth Fund
Benjamin R. (Mickey) King Endowed Fund	South Asian Foundation of Bartholomew County
Borcherding Visual Arts Fund	S. Paul Hill Memorial Fund
Carol Ann Boyer Carvin Diabetic Memorial Fund	The Asbury Conservatory Fund
Cassandra "Soni" Wilson Workforce Development Fund	The Nala Fund
Columbus High School Classes of 1957 and 1958 Endowment Fund	Voelz, Reed, & Mount Foundation
Columbus Service League Legacy Fund	Women's Giving Circle of Bartholomew County ENDOWMENT
David and Margaret Bottorff Math and Science Initiative for Elementary Teachers	Women's Giving Circle of Bartholomew County Fund
Donald W. & Catherine G. Jurgemeyer Endowment Fund (1)	
ECO15 Endowment Fund	
Elevate Childhood Cancer Research & Advocacy Philanthropic Fund	
Friends of the Children Fund	
Ginger & Friends Fund	
Hawcreek-Flat Rock Area Endowment Fund	
Hoosier Pioneer Preservation Fund	
Jimimi Fund for Substance Abuse Assistance	
Just Because Children's Fund	



## FUND LIST

**Agency Designated Funds** A fund established by an organization or by generous donor or family to help grow a specific not-for-profit organization and create sustainability for their good work; \$15,000 creates a fund.

Anderson Center Endowment Fund	Columbus Regional Hospital Foundation
Atterbury Bakalar Air Museum Fund	Endowment Fund
Bartholomew Consolidated School	Columbus Symphony Orchestra
Foundation Fund	Endowment Fund
Bartholomew County Genealogical	Community Education Coalition
Society Endowment Fund	Non-Permanent Fund
Bartholomew County Historical	Dan Arnholt AgrlInstitute Endowment Fund
Society Endowment Fund	Developmental Services Inc. Fund
Bartholomew County Humane Society	EAA Chapter 729 - Columbus, IN
Bartholomew County Parks Foundation	Ecumenical Assembly of Barth. Cty.
Bartholomew County Public Library Fund	Churches-Love Chapel Endowment Fund
Bartholomew County Veterans Memorial	Evelyn Seward Memorial Fund
Foundation Fund	Family Self-Sufficiency Endowment Fund
Big Brothers Big Sisters Endowment Fund	Family Self-Sufficiency Fund
Centerstone Mental Health Fund	Family Service Endowment Fund
Children Inc. Learning Center	First Presbyterian PreK Scholarship Fund
Endowment Fund	Foundation for Youth Fund
Columbus Adult Daycare Endowment Fund	Foundation for Youth/Youth Camp Fund
Columbus Area Arts Council	Hope Area Food Bank Endowment Fund
Endowment Fund	Housing Partnerships, Inc. Community
Columbus Area Arts Council Fund	Development Endowment Fund
Columbus Area Arts Council Robert	Indiana Artists Club, INC.
& Barbara Stewart Arts Education Fund	kidscommons Children's Museum Fund
Columbus Fellowship Club Fund	Leadership Bartholomew County Fund
Columbus Indiana Philharmonic	LifeDesigns Fund
Endowment Fund	Lincoln Central Neighborhood Family
Columbus Museum of Art & Design	Center Endowment Fund
Columbus Park Foundation	Mill Race Center, Inc. Endowment Fund
Columbus Park Foundation	Mill Race Center, Inc. Fund
Endowment Fund	North Star Montessori School Fund
Columbus Regional Hospital/	Our Hospice of South Central Indiana
Cancer Center Fund	Endowment Fund
	Route 21

Sandi's Closet Fund  
Sans Souci, Inc. Fund  
The Alfa Fund  
Turning Point Endowment Fund  
United Way of Bartholomew County  
Endowment Fund  
Volunteers in Medicine Fund

## FUND LIST

**Pass-Through Funds** More temporary in nature and unlike permanent endowed funds intended by donor to be distributed fully to serve the intended need.

Columbus Park Foundation Nexus  
Park Fund  
Columbus Park Foundation –  
People Trail Project 2012  
Franklin Square Maintenance Fund  
Heritage Fund Pass-Through  
Landmark Columbus Foundation  
Non-Permanent Fund  
Peds Reads/Growing Readers  
The Crump Encore Project

**Scholarship Funds** Donors establish educational grant funds with specific criteria and areas of study that reflect a wide diversity of interests, needs, accomplishments and student talents; \$15,000 creates a fund.

Abbott Forrester Garn Scholarship Fund	Columbus Autism Network
Analytical Engineering, Inc. (AEI)	Scholarship Fund
Scholarship Fund	Columbus Business and Professional
Andrew Parker Memorial Scholarship	Women's Scholarship
Andy Critzer Memorial Scholarship Fund	Columbus Crush Scholarship Fund
Annette Siler Hungerford	Columbus Evening Kiwanis
Memorial Scholarship	Scholarship Fund
Ann Ward Fine Arts Scholarship Fund	Columbus Rotary Scholarship Fund
Anthony Moravec Scholarship Fund	in Honor of Judson Erne
Barbara W. Stewart Scholarship Fund	Columbus Youth Hockey-Bryan Ritz
Barth/Brown County Medical Society	Memorial Fund
Medical Education Scholarship Fund	Corrilla B. Lentz Scholarship Fund
Bartholomew County REMC –	Dana Barton Merter Memorial Tennis
Alex Barkes Memorial Scholarship	Scholarship Fund
Bartholomew County REMC	Daniel Altmiller & Elizabeth Altmiller
Scholarship Fund	Memorial Scholarship
Becky S. Green Memorial Scholarship	Dave Galle Memorial Scholarship Fund
Behrman Big Dog Award Scholarship Fund	Developmental Services, Inc. (DSI)
Bill and Jody Harter Scholarship Fund	William K. Hadar Scholarship
Bill & Norma Perry Scholarship Fund	Doug Leonard Healthcare Occupations
Blake Hanger Memorial Scholarship Fund	Scholarship Fund
BME Sisters Scholarship Fund	Dr. Cleve James Francoeur, Jr. Memorial
Bob & Marcy Oswald Engineering	Scholarship Fund
Scholarship Fund	Dr. Glenn E. Callaway Dental
Bob Marshall-Bob Gordon Memorial	Scholarship Fund
Scholarship for Journalism Fund	Dr. & Mrs. Edward L. Probst Medical School
Brown Music Scholarship Fund	Scholarship Fund
Casey Fishe Memorial Scholarship	Duane Barrows Scholarship Fund
Charles D. Shepherd Memorial	Earl E. & Mildred L. Bless Hudson
Scholarship Fund	Scholarship for Education
Charles M. and Frances W. Condit	Edward Jones Investments
Nursing Education Fund	Scholarship Fund
Class of 1948 Scholarship Fund	Empowering Success Scholarship Fund



## FUND LIST

### Scholarship Funds cont.

Foods and/or Nutrition Careers Scholarship Fund	Karen Ann Coffman Memorial Nursing Scholarship Fund
Frank Burbrink Memorial 4-H Scholarship Fund	Keith Bean Medical Scholarship
Fred L. Armstrong Future Leaders Scholarship Fund	Kelly Family Fund for Journey North Professional Development
Goldie Gibson Memorial Endowment Fund	Kirby & Caroline Risk Scholarship Fund
Greg Craft Workhorse Memorial Scholarship	Lacey Family Scholarship Fund
Harold H. Heminger Graduate School Scholarship Fund	LHP Scholarship Fund
Harold R. Crawford Memorial Scholarship	Louis A. and Kathy M. Giovanini Scholarship Fund
Helmut O. von Buchler and Hartmut K. von Buchler 4-H Memorial Scholarship Fund	Lucien J. & Maryann J. Chadwick and Sam & Edith Shanks Memorial Scholarship Fund
Henry, Clara and Alice Weichman Scholarship Fund	Marguerite Burns Rust Scholarship for Animal Science Studies
Heritage Fund Memorial Scholarship Fund	Marguerite Burns Rust Scholarship Fund
Hispanic Latino Scholarship Fund	Marvin Johnson Scholarship Fund
J. Albert Finkel and Irma Jane Finkel Scholarship Fund	Mary Ann Heise Memorial Scholarship Fund
Jennifer Strietelmeier Memorial Art Scholarship Fund	Mary E. Behler Memorial Scholarship Fund
Jessie Mae Watson Cummins Scholarship Fund	Mary Katherine Shroyer and Henry Jung Vocational Scholarship
J. Howard Beam Memorial Scholarship Fund	Mayor's Government Scholarship Fund
John and Geneva Wickens Scholarship Fund	Michael R. Rogers Memorial Scholarship Fund
John McLachlan Soccer Scholarship Fund	Mike Spencer Memorial Scholarship Fund
John R. Skobel III Memorial Scholarship Fund	Mildred and Homer Crank Scholarship Fund
Jones Sisters Fund	Myron Glick Memorial Scholarship Fund
Joseph L. Cummins Scholarship Fund	One Step At A Time Scholarship Fund
Julie M. McKinney Memorial Scholarship	Patrick Bowman Memorial Music Fund
	Paul & Prudence Steinbarger Memorial Scholarship Fund
	Philip R. Miller Memorial Scholarship for the Visual Arts

Phil Jackson Memorial Fast-Pitch  
Softball Scholarship

Purdue Alumni Advisory Council  
Scholarship Fund

Ray Amlung Memorial Scholarship

Robert J. Sonntag Memorial  
Scholarship Fund

S. Edgar and Delora Lauther Memorial Fund

Sgt. Jonathon Michael Hunter Legacy  
Scholarship Fund

Steve Antcliff Memorial Scholarship Fund

Susan Solomon Scholarship Fund

The Barker Family Scholarship Fund

The Martha Kalb "You GO Girl" Scholarship

The Reverend Dr. William R. Laws  
Memorial Scholarship

Thomas H. Sayrs Memorial Scholarship

Timothy Ray Bean Memorial  
Scholarship Fund

Todd and Julie Bergman Scholarship

Toyota Material Handling Scholarship Fund

Waldo M. & Madge C. Harrison Fund

Zach Deak Golden Boot Scholarship Fund

FUND LIST

**Unrestricted Funds** Donors place no restrictions on how these funds are to be used, providing greatest flexibility in making grants to address immediate and changing community needs.

George W. and Glowdine E. Budd  
Memorial Fund  
Heritage Fund Capital  
Heritage Fund – Community Fund

**Personal Foundations** A tool for donors who want to practice strategic philanthropy at the highest level. Personal Foundations engage donors by allowing them control and flexibility over their grantmaking while providing the opportunity to invest in the future and progress of the community and/or the causes most important to them. Personal Foundations are a great option for donors who want to grow their philanthropic impact and avoid the cost, administrative burden and funding restrictions of a private foundation. Personal Foundations can also be branded to the donor’s personal preferences; \$100,000 starts a Personal Foundation.

Family Chiropractic and Wellness  
Community Fund  
Kirr Family Foundation  
Mark & Wendy Elwood Foundation  
Richard & Nancy Wagner Family Foundation  
Smith Family Fund  
The Ogilvie Fund  
The Woodworth Family Foundation  
Voelz, Reed, & Mount Foundation



**DONOR ADVISED FUND GRANTS**

Grant Granting Fund	Amount
Indianapolis Jazz Foundation A. John & Lois Friend Memorial Fund	\$875.00
Ivy Tech Foundation. Inc. Arnett Giving Fund	\$1,000.00
Turning Point Domestic Violence Services Arnett Giving Fund	\$1,000.00
Ecumenical Assembly of Bartholomew County Churches/Love Chapel Bill and Jody Harter Community Fund	\$800.00
Just Friends Bill and Jody Harter Community Fund	\$800.00
Lincoln-Central Neighborhood Family Center Bill and Jody Harter Community Fund	\$800.00
Turning Point Domestic Violence Services Bill and Jody Harter Community Fund	\$800.00
Chain Breaker Ministries Inc. Carmen and Eric Retrum Family Fund	\$5,000.00
Chain Breaker Ministries Inc. Carmen and Eric Retrum Family Fund	\$2,000.00
Lemonade Bros Coca-Cola Bottling of Columbus Donor Advised Endowment Fund	\$550.00
Red Arch Community Events, Inc Coca-Cola Bottling of Columbus Donor Advised Endowment Fund	\$250.00
Columbus Park Foundation Nexus Park Fund Coca-Cola Bottling of Columbus Donor Advised Endowment Fund	\$25,000.00
United Way of Bartholomew County Coca-Cola Bottling of Columbus Donor Advised Endowment Fund	\$5,000.00
Foundation for Youth Don and Dody Harvey Philanthropic Fund	\$1,000.00
IU Foundation Don and Dody Harvey Philanthropic Fund	\$1,000.00
Bartholomew County Humane Society Family Chiropractic and Wellness Community Fund	\$10,000.00
Friends of Animal Care Services Family Chiropractic and Wellness Community Fund	\$10,000.00

First Christian Church Friends of First Christian Church Architecture	\$130,000.00
African American Foundation of Bartholomew County Irwin Financial Foundation Donor Advised Fund	\$25,000.00
Next Gen Downtown Fund Irwin Financial Foundation Donor Advised Fund	\$150,000.00
Human Rights Commission – City of Columbus Irwin Financial Foundation Donor Advised Fund	\$240.00
Hispanic Latino Scholarship Fund Irwin Financial Foundation Donor Advised Fund	\$80,000.00
Columbus Area Chamber Foundation Irwin Financial Foundation Donor Advised Fund	\$50,000.00
Landmark Columbus Foundation Irwin Financial Foundation Donor Advised Fund	\$44,200.00
African American Foundation of Bartholomew County Irwin Financial Foundation Donor Advised Fund	\$50,000.00
Next Gen Downtown Fund Irwin Financial Foundation Donor Advised Fund	\$75,000.00
Columbus Crump LLC Irwin-Sweeney-Miller Foundation Legacy Advised Fund	\$30,000.00
Landmark Columbus Foundation Irwin-Sweeney-Miller Foundation Legacy Advised Fund	\$44,200.00
Clarity of South Central Indiana Jeff and Lynn Brown Fund	\$500.00
Heritage Fund – Community Fund Jeff and Lynn Brown Fund	\$500.00
Mission Resource International Jeff and Lynn Brown Fund	\$500.00
Turning Point Domestic Violence Services Jeff and Lynn Brown Fund	\$500.00
Bartholomew County Historical Society Jeff and Lynn Brown Fund	\$1,000.00
Columbus Salvation Army Jeff and Lynn Brown Fund	\$1,000.00
Foundation for Youth Jeff and Lynn Brown Fund	\$1,000.00

**DONOR ADVISED FUND GRANTS cont.**

Landmark Columbus Foundation Jeff and Lynn Brown Fund	\$1,000.00
Clarity of South Central Indiana Jeff and Lynn Brown Fund	\$5,000.00
The Arc of Bartholomew County Kirr Family Fund	\$1,000.00
Tiny News Collective Inc #3868 Kirr Family Fund	\$1,000.00
St. Bartholomew Catholic School Kirr Family Fund	\$1,000.00
Marfa Independent School Corporation Kirr Family Fund	\$1,000.00
Bull Dog Alumni Association Inc. Kirr Family Fund	\$500.00
Friends of the Ruidosa Church Kirr Family Fund	\$500.00
Friends of Hunter Gym Kirr Family Fund	\$500.00
Turning Point Domestic Violence Services Kirr Family Fund	\$4,000.00
St. Bartholomew Catholic Parish Kirr Family Fund	\$500.00
St. Bartholomew Catholic Parish Kirr Family Fund	\$5,000.00
Columbus Area Chamber Foundation Pia O'Connor Philanthropic Fund	\$1,000.00
Columbus East High School Psi Iota Xi/Grace Turner Fund	\$2,500.00
First Presbyterian Church Robert A. and Mary F. Orben Fund	\$4,500.00
Landmark Columbus Foundation Endowment Fund Robert N. Brown Fund	\$10,000.00
South Asian Foundation of Bartholomew County Sarla & Swadesh Kalsi Donor Advised Fund	\$5,000.00
Columbus Indiana Philharmonic Sarla & Swadesh Kalsi Donor Advised Fund	\$1,000.00

Dancers Studio Inc. Sarla & Swadesh Kalsi Donor Advised Fund	\$1,200.00
Foundation for Youth Sarla & Swadesh Kalsi Donor Advised Fund	\$1,000.00
Landmark Columbus Foundation Endowment Fund Stevens Family Fund	\$50,000.00
Just Friends Summerville Family Fund	\$250.00
Turning Point Domestic Violence Services Summerville Family Fund	\$250.00
Utopia Wildlife Rehabilitators Summerville Family Fund	\$250.00
Human Services, Inc. Summerville Family Fund	\$797.00
Bartholomew County Humane Society Tannenbaum Family Charitable Fund	\$1,000.00
The Nala Fund Tannenbaum Family Charitable Fund	\$2,000.00
Columbus Park Foundation The Willmore Community Fund	\$500.00
Bull Dog Alumni Association Inc. The Willmore Community Fund	\$200.00
WFYI The Willmore Community Fund	\$200.00
Columbus Symphony Orchestra The Willmore Community Fund	\$250.00
Landmark Columbus Foundation The Willmore Community Fund	\$250.00
Our Hospice of South Central Indiana The Willmore Community Fund	\$250.00
Heritage Fund – Community Fund The Willmore Community Fund	\$500.00
United Way of Bartholomew County The Willmore Community Fund	\$500.00
Lincoln-Central Neighborhood Family Center The Willmore Community Fund	\$2,000.00



DONOR ADVISED FUND GRANTS cont.	
Bridge to Dove Recovery House Weber Family Donor Advised Fund	\$1,000.00
Ecumenical Assembly of Bartholomew County Churches/Love Chapel Weber Family Donor Advised Fund	\$1,000.00
Just Friends Weber Family Donor Advised Fund	\$1,000.00
Putnam County Community Foundation Weber Family Donor Advised Fund	\$1,500.00
Clay Township Fire Department Weber Family Donor Advised Fund	\$1,000.00
Harrison Twp. Volunteer Fire Co., Inc. Weber Family Donor Advised Fund	\$1,000.00
Sandi's Closet Fund Weber Family Donor Advised Fund	\$1,000.00
St. Peter's Lutheran Church Weber Family Donor Advised Fund	\$3,000.00
Police Athletic Activities League Weber Family Donor Advised Fund	\$1,500.00
Beloved Weber Family Donor Advised Fund	\$1,000.00
Toys for Tots Weber Family Donor Advised Fund	\$250.00
Red Arch Community Events, Inc Weber Family Donor Advised Fund	\$500.00
Holy Cross Lutheran Church Weber Family Donor Advised Fund	\$2,000.00
Our Hospice of South Central Indiana Woods & Grooms Endowment Fund	\$1,000.00
St. Paul's Episcopal Church Woods & Grooms Endowment Fund	\$5,000.00
Bartholomew County Historical Society Woods & Grooms Endowment Fund	\$500.00
Bull Dog Alumni Association Inc. Woods & Grooms Endowment Fund	\$1,000.00
St. Paul's Episcopal Church Woods & Grooms Endowment Fund	\$1,299.00

Just Friends Woods & Grooms Endowment Fund	\$10,000.00
Naples Zoo Woods & Grooms Endowment Fund	\$10,000.00

**DESIGNATED FUND GRANTS**

Grant Granting Fund	Amount
Bartholomew County Historical Society A. Dean & Martha E. Taylor Fund	\$3,732.00
ABC Stewart School ABC Stewart Endowment Fund	\$2,405.00
Dancers Studio Inc. Alma Wiley Memorial Scholarship Fund	\$318.00
Columbus Indiana Philharmonic Ann Marshall Knobloch Endowment Fund	\$76,448.03
Mill Race Center, Inc. Ann Marshall Knobloch Endowment Fund	\$76,448.03
Our Hospice of South Central Indiana Ann Marshall Knobloch Endowment Fund	\$76,448.03
Turning Point Domestic Violence Services Ann Marshall Knobloch Endowment Fund	\$76,448.04
Bartholomew County Library Associates Bartholomew County Library Associates Fund (Hooten Family Memorial)	\$2,524.00
Bartholomew County Historical Society BCHS Arvin Legacy Fund	\$1,877.00
Ivy Tech Foundation. Inc. Ben & Pat Bush Nursing Fund in Memory of Edythe & Max Gosnell	\$2,091.00
Columbus East High School Betty Welch Musical Fund	\$596.00
Columbus North High School Betty Welch Musical Fund	\$596.00
Indiana Masonic Home Inc. Bill & Norma Perry Memorial Fund	\$3,388.93
American Cancer Society – Indiana Bill & Norma Perry Memorial Fund	\$3,388.95
Alzheimers Association – Greater Indiana Chapter Bill & Norma Perry Memorial Fund	\$6,766.49
Columbus Regional Health Foundation Bill & Norma Perry Memorial Fund	\$6,766.49
IU Foundation Bill & Norma Perry Memorial Fund	\$12,850.64

Jennings County Community Foundation Bill & Norma Perry Memorial Fund	\$12,850.64
Scott County Community Foundation Bill & Norma Perry Memorial Fund	\$33,855.19
Emma Jensen Bill and Sally Hanley Excellence in Teaching Award Fund	\$1,000.00
Family Self Sufficiency Bob and Charlotte Aldenhagen Fund	\$4,037.00
Bartholomew County Historical Society Charles Taylor & Theresa Ann Ross Fund	\$463.00
Columbus Chinese Association Columbus Chinese School Endowment Fund	\$7,436.00
Columbus Regional Health Foundation Columbus Emergency Physicians, Inc. Fund	\$419.00
Community Education Coalition Community Education Coalition Endowment Fund	\$150,881.00
Heritage Fund Operating Fund Continuous Outreach Process Fund	\$10,007.05
City of Columbus Continuous Outreach Process Fund	\$8,000.00
ACTEC Foundation Donald W. Jurgemeyer Endowment Fund (2)	\$6,433.69
Asbury United Methodist Church Donald W. Jurgemeyer Endowment Fund (2)	\$6,433.69
Indiana Bar Foundation Donald W. Jurgemeyer Endowment Fund (2)	\$6,433.69
Iowa Law School Foundation Donald W. Jurgemeyer Endowment Fund (5)	\$2,386.00
Indiana Bar Foundation Donald W. Jurgemeyer Endowment Fund (8)	\$19,473.00
The Reverend Dr. William R. Laws Memorial Scholarship Dr. & Mrs. William R. Laws, Jr. Philanthropic Fund	\$1,354.00
Foundation for Youth Edgar & DeLora L. Lauther Endowment Fund	\$17,218.50
Columbus Regional Health Edgar & DeLora L. Lauther Endowment Fund	\$20,662.20

**DESIGNATED FUND GRANTS cont.**

Heritage Fund – Community Fund	\$30,993.30
Edgar & DeLora L. Lauther Endowment Fund	
Family School Partners/BCSC	\$892.00
Family School Partners Designated Endowment Fund	
Bartholomew County Humane Society	\$794.00
Henry, Clara and Alice Weichman Bartholomew County Humane Society Memorial Fund	
Franklin Square Maintenance Fund	\$200,000.00
Heritage Fund Administrative Endowment Fund	
Bartholomew Consolidated School Foundation	\$880.00
In Honor of R.W. Witte & Helen M. Witte and Earl V. & Rosalyn R. Hess Fund	
Family School Partners/BCSC	\$1,344.00
Judy Huehl Scholtz Memorial Fund	
National Wild Turkey Federation	\$1,146.00
Kyle Carothers Hunt of a Lifetime Memorial Fund	
Bartholomew County Historical Society	\$262.62
L. Edward John and Mary Jean John Endowment Fund	
Bartholomew County Public Library	\$262.62
L. Edward John and Mary Jean John Endowment Fund	
Columbus Indiana Philharmonic	\$262.62
L. Edward John and Mary Jean John Endowment Fund	
Columbus Museum of Art and Design	\$262.62
L. Edward John and Mary Jean John Endowment Fund	
Columbus Symphony Orchestra	\$262.62
L. Edward John and Mary Jean John Endowment Fund	
Duke University	\$262.62
L. Edward John and Mary Jean John Endowment Fund	
Heritage Fund Administrative Endowment Fund	\$262.62
L. Edward John and Mary Jean John Endowment Fund	
Southwestern College	\$262.62
L. Edward John and Mary Jean John Endowment Fund	
Indianapolis Symphony Orchestra	\$437.70
L. Edward John and Mary Jean John Endowment Fund	
Foundation for Youth Fund	\$875.40
L. Edward John and Mary Jean John Endowment Fund	

Mill Race Center, Inc.	\$1,313.10
L. Edward John and Mary Jean John Endowment Fund	
DePauw University	\$2,013.42
L. Edward John and Mary Jean John Endowment Fund	
First United Methodist Church	\$2,013.42
L. Edward John and Mary Jean John Endowment Fund	
Ivy Tech Foundation. Inc.	\$1,027.00
Leon Cline Family Fund	
Ivy Tech Foundation. Inc.	\$927.00
Marjorie & Orphie Bridges Philanthropic Fund	
Centerstone	\$38,983.00
Martha L. Middleton Mental Health Fund	
Bartholomew County Historical Society	\$876.00
Mr. & Mrs. Robert F. Reeves Philanthropic Fund	
Our Hospice of South Central Indiana	\$81,685.00
Olive Murphy Memorial Hospice Fund	
Bartholomew County Public Library	\$2,800.22
Peds Reads	
Make A Wish Foundation OH, KY, IN	\$40,000.00
Peyton's Make-A-Wish Fund sponsored by Landmark Farm Foundation for the benefit of Bartholomew County children	
Ivy Tech Foundation. Inc.	\$514.00
R. Kent Witte, Attorney PC & Stacy Ford Walters in Memory of Shannon Ford Fund	
Columbus Signature Academy – New Tech Campus	\$1,450.00
Raymond and Jane Frede Columbus Signature Academy Fund	
Carrie Sanford	\$5,000.00
Reams Family Award for Excellence in Teaching	
Sydney Morey	\$6,000.00
Reams Family Award for Excellence in Teaching	
Sarah Brumberg	\$4,000.00
Reams Family Award for Excellence in Teaching	
Bartholomew County Historical Society	\$182,399.00
Reeves Bartholomew County Historical Society Fund	
Foundation for Youth	\$143,424.00
Reeves Columbus Youth Camp Endowment Fund	



**DESIGNATED FUND GRANTS cont.**

Columbus Indiana Philharmonic	\$7,435.00
Reeves Early Music Education Endowment	
First Presbyterian Church	\$41,000.00
Reeves First Presbyterian Church Foundation Fund	
Heritage Fund Administrative Endowment Fund	\$3,073.00
Robert J. Marshall Memorial Philanthropic Fund	
Columbus Park Foundation	\$1,399.00
Russell and Jean Hashman Endowment Fund	
Columbus Signature Academy – Lincoln Campus	\$467.00
Sue A. Barton Lincoln Elementary School 1st Grade Memorial Fund	
Columbus Salvation Army	\$997.00
The Salin Family Fund	
Columbus Salvation Army	\$1,327.00
Tiede Salvation Army Fund	
Columbus Regional Health Foundation	\$402.00
William F. and Lisa C. Schultz Fund	
Turning Point Domestic Violence Services Non-Permanent Fund	\$11,374.00
Women Helping Women fbo Turning Point Fund	

**FIELD OF INTEREST FUND GRANTS**

Grant Granting Fund	Amount
Cynthia Molitor	\$750.00
AEI Youth Sports Fund	
Columbus Lacrosse Club	\$1,600.00
AEI Youth Sports Fund	
Taylorsville Bantam Football League, Inc.	\$2,000.00
AEI Youth Sports Fund	
Stephanie Schrougham	\$600.00
AEI Youth Sports Fund	
Alicia Cottle	\$100.00
AEI Youth Sports Fund	
Jamie Bumbalough	\$800.00
AEI Youth Sports Fund	
Maria Garcia Cambron	\$370.00
AEI Youth Sports Fund	
Tina Miller	\$500.00
AEI Youth Sports Fund	
Police Athletic League of Columbus	\$1,200.00
AEI Youth Sports Fund	
South Central Indiana MTB Composite, Corp.	\$1,200.00
AEI Youth Sports Fund	
Total Tae Kwon Do Booster Club	\$1,200.00
AEI Youth Sports Fund	
Columbus Express Soccer	\$3,500.00
AEI Youth Sports Fund	
Emily Broderick	\$500.00
AEI Youth Sports Fund	
Columbus North Athletic Department	\$1,000.00
AEI Youth Sports Fund	
Sage Lacey	\$600.00
AEI Youth Sports Fund	
Melinda Walsh	\$700.00
AEI Youth Sports Fund	
Melissa Gausmann	\$750.00
AEI Youth Sports Fund	

FIELD OF INTEREST FUND GRANTS cont.		
Stephanie Schrougham AEI Youth Sports Fund	\$100.00	
John Sims AEI Youth Sports Fund	\$600.00	
Elisabeth Eaton AEI Youth Sports Fund	\$300.00	
Mikell Murray AEI Youth Sports Fund	\$330.00	
Mikell Murray AEI Youth Sports Fund	\$450.00	
Diesel Athletics, Inc. AEI Youth Sports Fund	\$500.00	
Clifty Creek Elementary School AEI Youth Sports Fund	\$1,000.00	
Taylorville Bantam Football League, Inc. AEI Youth Sports Fund	\$2,000.00	
Columbus Youth Hockey AEI Youth Sports Fund	\$1,700.00	
Tiffany Tipton AEI Youth Sports Fund	\$250.00	
International Community Development Inc. of Columbus African American Foundation of Bartholomew County	\$750.00	
Indiana University Foundation African American Foundation of Bartholomew County	\$1,500.00	
Ivy Tech Foundation. Inc. African American Foundation of Bartholomew County	\$1,000.00	
Ivy Tech Foundation. Inc. African American Foundation of Bartholomew County	\$1,000.00	
Columbus Enrichment Program African American Foundation of Bartholomew County	\$200.00	
International Community Development Inc. of Columbus African American Foundation of Bartholomew County	\$500.00	
The Arc of Bartholomew County African American Foundation of Bartholomew County	\$500.00	
Columbus Enrichment Program African American Foundation of Bartholomew County	\$400.00	

Columbus Indiana Philharmonic African American Foundation of Bartholomew County	\$400.00	
Bartholomew County Historical Society African American Foundation of Bartholomew County	\$50.00	
Community Education Coalition African American Foundation of Bartholomew County	\$1,000.00	
Columbus Area Arts Council African American Foundation of Bartholomew County	\$4,500.00	
Kayla Jones African American Foundation of Bartholomew County	\$1,000.00	
Indiana Wesleyan University Bursar African American Foundation of Bartholomew County	\$1,000.00	
Kayla Jones African American Foundation of Bartholomew County	\$1,000.00	
Columbus Parks and Recreation African American Foundation of Bartholomew County	\$1,200.00	
Human Rights Commission – City of Columbus African American Foundation of Bartholomew County	\$240.00	
Purpose to Play, Inc. African American Foundation of Bartholomew County	\$1,000.00	
Ivy Tech Community College – Business Office African American Foundation of Bartholomew County	\$1,000.00	
Indiana University Bursar African American Foundation of Bartholomew County	\$1,000.00	
Purdue University Bursar African American Foundation of Bartholomew County	\$1,000.00	
Human Rights Commission – City of Columbus African American Foundation of Bartholomew County	\$240.00	
University of Louisville Bursar African American Foundation of Bartholomew County	\$1,000.00	
Su Casa African American Foundation of Bartholomew County	\$2,500.00	
Columbus Enrichment Program African American Foundation of Bartholomew County	\$500.00	
Faith Ministries African American Foundation of Bartholomew County	\$2,400.00	

**FIELD OF INTEREST FUND GRANTS cont.**

IU Columbus Office of Development	\$1,000.00
African American Foundation of Bartholomew County	
IU Columbus Office of Development	\$1,000.00
African American Foundation of Bartholomew County	
IU Columbus Office of Development	\$1,000.00
African American Foundation of Bartholomew County	
Foundation for Youth	\$500.00
African American Foundation of Bartholomew County	
The Arc of Bartholomew County	\$3,000.00
African American Foundation of Bartholomew County	
Columbus Enrichment Program	\$777.00
African American Foundation of Bartholomew County	
Columbus Enrichment Program	\$1,000.00
African American Foundation of Bartholomew County	
Legal Aid-District Eleven Inc.	\$1,390.00
Bartholomew County Bar Association Endowment Fund	
Bartholomew County Library Associates	\$1,280.00
Bartholomew Reads Endowment Fund	
NAACP of Bartholomew County	\$2,000.00
Benjamin R. (Mickey) King Endowed Fund	
Learning Tree Preschool	\$441.62
Borcherding Visual Arts Fund	
St. Paul Evangelical Lutheran Church Preschool	\$441.63
Borcherding Visual Arts Fund	
First Presbyterian Preschool	\$441.75
Borcherding Visual Arts Fund	
Diabetes Youth Foundation of Indiana	\$1,652.00
Carol Ann Boyer Carvin Diabetic Memorial Fund	
Columbus Crump LLC	\$25,000.00
Columbus Downtown Impact Investment Fund	
Columbus Crump LLC	\$1,000.00
Columbus Downtown Impact Investment Fund	
Columbus Capital Foundation	\$100,000.00
Columbus Downtown Impact Investment Fund	
Columbus Capital Foundation	\$50,000.00
Columbus Downtown Impact Investment Fund	

Columbus Crump LLC	\$15,000.00
Columbus Downtown Impact Investment Fund	
Columbus Capital Foundation	\$547,298.94
Columbus Downtown Impact Investment Fund	
Ivy Tech Foundation. Inc.	\$2,462.00
Columbus High School Classes of 1957 and 1958 Endowment Fund	
First Things First Porter County	\$2,000.00
Columbus Service League Legacy Fund	
Children, Inc.	\$8,183.00
Columbus Service League Legacy Fund	
Parkside Elementary School	\$699.00
David and Margaret Bottorff Math and Science Initiative for Elementary Teachers	
Mt. Healthy Elementary School	\$800.00
David and Margaret Bottorff Math and Science Initiative for Elementary Teachers	
Clifty Creek Elementary School	\$800.00
David and Margaret Bottorff Math and Science Initiative for Elementary Teachers	
Lillian C. Schmitt Elementary School	\$834.00
David and Margaret Bottorff Math and Science Initiative for Elementary Teachers	
L. Frances Smith Elementary School	\$910.00
David and Margaret Bottorff Math and Science Initiative for Elementary Teachers	
Clifty Creek Elementary School	\$981.00
David and Margaret Bottorff Math and Science Initiative for Elementary Teachers	
Parkside Elementary School	\$1,000.00
David and Margaret Bottorff Math and Science Initiative for Elementary Teachers	
Rockcreek Elementary School	\$1,000.00
David and Margaret Bottorff Math and Science Initiative for Elementary Teachers	
Taylorville Elementary School	\$2,598.00
David and Margaret Bottorff Math and Science Initiative for Elementary Teachers	
Mike Richardson	\$5,000.00
Donald W. & Catherine G. Jurgemeyer Endowment Fund (1)	
Students Fund of Hope	\$5,000.00
Donald W. & Catherine G. Jurgemeyer Endowment Fund (1)	
Turning Point Domestic Violence Services	\$10,000.00
Donald W. & Catherine G. Jurgemeyer Endowment Fund (1)	
Community Education Coalition	\$200,029.00
ECO15 Endowment Fund	



**FIELD OF INTEREST FUND GRANTS cont.**

United Way of Bartholomew County Friends of the Children Fund	\$1,500.00
Flat Rock-Hawcreek School Corporation Friends of the Children Fund	\$2,500.00
Bartholomew Consolidated School Corp Friends of the Children Fund	\$500.00
Bartholomew County Humane Society Ginger & Friends Fund	\$324.00
Friends of Animal Care Services Ginger & Friends Fund	\$324.00
Hauser Junior-Senior High School Hawcreek-Flat Rock Area Endowment Fund	\$100.00
Heritage of Hope Hawcreek-Flat Rock Area Endowment Fund	\$267.00
Flat Rock-Hawcreek School Corporation Hawcreek-Flat Rock Area Endowment Fund	\$300.00
Hope Elementary School Hawcreek-Flat Rock Area Endowment Fund	\$500.00
Hope Elementary School Hawcreek-Flat Rock Area Endowment Fund	\$800.00
Flat Rock-Hawcreek School Corporation Hawcreek-Flat Rock Area Endowment Fund	\$1,200.00
Community Center of Hope Hawcreek-Flat Rock Area Endowment Fund	\$1,352.00
Community Center of Hope Hawcreek-Flat Rock Area Endowment Fund	\$1,500.00
Students Fund of Hope Hawcreek-Flat Rock Area Endowment Fund	\$1,500.00
Yellow Trail Museum, Inc. Hawcreek-Flat Rock Area Endowment Fund	\$1,661.00
Hauser Junior-Senior High School Hawcreek-Flat Rock Area Endowment Fund	\$1,734.00
Hope Elementary School Hawcreek-Flat Rock Area Endowment Fund	\$1,755.00
Hope Elementary School Hawcreek-Flat Rock Area Endowment Fund	\$2,000.00

Hauser Junior-Senior High School Hawcreek-Flat Rock Area Endowment Fund	\$2,780.00
Hope Summer Playground Hawcreek-Flat Rock Area Endowment Fund	\$2,861.00
Hartsville and Community Volunteer Fire Department Hawcreek-Flat Rock Area Endowment Fund	\$3,100.00
Hope Volunteer Fire Department, Inc. Hawcreek-Flat Rock Area Endowment Fund	\$3,105.00
Clifford Volunteer Fire Department Hawcreek-Flat Rock Area Endowment Fund	\$3,136.00
Hope Elementary School Hawcreek-Flat Rock Area Endowment Fund	\$3,430.00
Hope Elementary School Hawcreek-Flat Rock Area Endowment Fund	\$3,500.00
FRHC Replay Hawcreek-Flat Rock Area Endowment Fund	\$4,000.00
Hawpatch Hawcreek Conservation Club Hawcreek-Flat Rock Area Endowment Fund	\$4,359.00
American Legion Post #229 Hawcreek-Flat Rock Area Endowment Fund	\$5,000.00
Simmons One Room School House Hawcreek-Flat Rock Area Endowment Fund	\$5,000.00
Flat Rock-Hawcreek School Corporation Hawcreek-Flat Rock Area Endowment Fund	\$7,300.00
Community Downtown Jimimi Fund for Substance Abuse Assistance	\$1,443.00
Bartholomew County Public Library Just Because Children's Fund	\$25,000.00
Make A Wish Foundation OH, KY, IN Just Because Children's Fund	\$2,000.00
Clifty Creek Elementary School Just Because Children's Fund	\$2,500.00
Bartholomew County Public Library Mildred A. Reeves Early Education Fund	\$15,000.00
Columbus Regional Health Foundation Mildred A. Reeves Early Education Fund	\$30,000.00

**FIELD OF INTEREST FUND GRANTS cont.**

Children, Inc.	\$5,000.00
Mildred A. Reeves Early Education Fund	
Office of Downtown Development	\$30,000.00
Next Gen Downtown Fund	
Office of Downtown Development	\$45,000.00
Next Gen Downtown Fund	
Office of Downtown Development	\$39,000.00
Next Gen Downtown Fund	
Office of Downtown Development	\$75,000.00
Next Gen Downtown Fund	
Community Center of Hope	\$768.00
No Child Hungry Endowment Fund	
Ecumenical Assembly of Bartholomew County Churches / Love Chapel	\$768.00
No Child Hungry Endowment Fund	
Columbus East High School	\$1,154.00
Philip R. Miller Art Purchase Awards Fund	
Bartholomew Consolidated School Foundation	\$814.00
S. Paul Hill Memorial Fund	
Asbury United Methodist Church	\$1,497.00
Schicke Children and Youth Fund	
First Things First Porter County	\$1,350.00
Schicke Children and Youth Fund	
Bartholomew Consolidated School Foundation	\$12,000.00
South Asian Foundation of Bartholomew County	
Asbury United Methodist Church	\$15,000.00
The Asbury Conservatory Fund	
Asbury United Methodist Church	\$25,000.00
The Asbury Conservatory Fund	
Asbury United Methodist Church	\$30,000.00
The Asbury Conservatory Fund	
Asbury United Methodist Church	\$30,000.00
The Asbury Conservatory Fund	
Asbury United Methodist Church	\$30,000.00
The Asbury Conservatory Fund	
Bartholomew County Humane Society	\$5,000.00
The Nala Fund	

Friends of Animal Care Services	\$5,000.00
The Nala Fund	
Bartholomew County Humane Society	\$5,000.00
The Nala Fund	
Friends of Animal Care Services	\$5,000.00
The Nala Fund	
Women's Giving Circle of Bartholomew County Fund	\$96,462.42
Women's Giving Circle of Bartholomew County ENDOWMENT	
Council for Youth Development	\$1,040.00
Women's Giving Circle of Bartholomew County Fund	
Children, Inc.	\$11,817.00
Women's Giving Circle of Bartholomew County Fund	
Foundation for Youth	\$498.96
Women's Giving Circle of Bartholomew County Fund	
Community Education Coalition	\$995.00
Women's Giving Circle of Bartholomew County Fund	

**AGENCY FUND GRANTS**

Grant Granting Fund	Amount
Anderson Center, Inc. Anderson Center Endowment Fund	\$1,220.00
Atterbury Bakalar Air Museum Atterbury Bakalar Air Museum Fund	\$921.00
Bartholomew Consolidated School Foundation Bartholomew Consolidated School Foundation Fund	\$1,015.00
Bartholomew County Genealogical Society Bartholomew County Genealogical Society Endowment Fund	\$557.00
Bartholomew County Historical Society Bartholomew County Historical Society Endowment Fund	\$4,286.00
Bartholomew County Humane Society Bartholomew County Humane Society	\$1,941.00
Bartholomew County Public Library Bartholomew County Public Library Fund	\$1,475.00
Foundation for Youth Big Brothers Big Sisters Endowment Fund	\$7,800.00
Centerstone Centerstone Mental Health Fund	\$716.00
Just Friends Columbus Adult Daycare Endowment Fund	\$2,450.00
Columbus Area Arts Council Columbus Area Arts Council Endowment Fund	\$1,897.00
Columbus Area Arts Council Columbus Area Arts Council Robert & Barbara Stewart Arts Education Fund	\$7,670.00
Columbus Indiana Philharmonic Columbus Indiana Philharmonic Endowment Fund	\$72,637.00
Columbus Museum of Art and Design Columbus Museum of Art & Design	\$21,116.00
Columbus Regional Health Foundation Columbus Regional Hospital/Cancer Center Fund	\$8,786.00
AgrilInstitute Dan Arnholt AgrlInstitute Endowment Fund	\$6,627.00
Columbus EAA Chapter 729 Inc. EAA Chapter 729 – Columbus, IN	\$2,227.00

Ecumenical Assembly of Bartholomew County Churches/Love Chapel Ecumenical Assembly of Barth. Cty. Churches – Love Chapel Endowment Fund	\$4,064.00
Family Self Sufficiency Family Self-Sufficiency Endowment Fund	\$2,212.00
Family Service, Inc Family Service Endowment Fund	\$2,026.00
Foundation for Youth Foundation for Youth Fund	\$100,000.00
Foundation for Youth Foundation for Youth Fund	\$100,000.00
Foundation for Youth Foundation for Youth/Youth Camp Fund	\$9,118.00
Hope Area Food Bank Hope Area Food Bank Endowment Fund	\$7,522.00
Thrive-Alliance Housing Partnerships, Inc. Community Development Endowment Fund	\$1,979.00
Indiana Artists Club Inc. Indiana Artists Club, INC.	\$945.00
kidscommons kidscommons Children's Museum Fund	\$68,347.00
Community Education Coalition Leadership Bartholomew County Fund	\$773.00
Lincoln-Central Neighborhood Family Center Lincoln Central Neighborhood Family Center Endowment Fund	\$1,422.00
Mill Race Center, Inc. Mill Race Center, Inc. Endowment Fund	\$1,946.00
Mill Race Center, Inc. Mill Race Center, Inc. Fund	\$8.95
North Star Montessori North Star Montessori School Fund	\$892.00
Our Hospice of South Central Indiana Our Hospice of South Central Indiana Endowment Fund	\$10,223.00
Human Services, Inc. Route 21	\$1,328.00
Sans Souci, Inc. Sans Souci, Inc. Fund	\$2,244.00



**AGENCY FUND GRANTS cont.**

St. Bartholomew Catholic Parish	\$919.00
The Alfa Fund	

## PASS-THROUGH FUND GRANTS

Grant	Amount
Bartholomew County Public Library	\$60,664.00
Heritage Fund Pass-Through	
Family School Partners / BCSC	\$184,336.00
Heritage Fund Pass-Through	
Heritage Fund Memorial Scholarship Fund	\$750.00
Heritage Fund Pass-Through	
Columbus Downtown Impact Investment Fund	\$2,890.00
Heritage Fund Pass-Through	
Columbus Crump LLC	\$23,110.00
Heritage Fund Pass-Through	
Indiana Youth Group	\$1,967.36
Heritage Fund Pass-Through	
Pride Alliance Columbus, IN, Inc.	\$1,967.37
Heritage Fund Pass-Through	
Columbus Crump LLC	\$20,000.00
Heritage Fund Pass-Through	
Columbus Crump LLC	\$93.80
Heritage Fund Pass-Through	
Landmark Columbus Foundation	\$5,000.00
Heritage Fund Pass-Through	
Columbus Crump LLC	\$1,000.00
Heritage Fund Pass-Through	
Landmark Columbus Foundation	\$375,000.00
Landmark Columbus Foundation Non-Permanent Fund	
Columbus Crump LLC	\$3,000.00
Lilly GIFT VIII Matching Admin Fund	
kidscommons	\$50,000.00
Lilly GIFT VIII Matching Admin Fund	
kidscommons	\$50,000.00
Lilly GIFT VIII Matching Admin Fund	
Columbus Crump LLC	\$100,000.00
Lilly GIFT VIII Matching Admin Fund	
Columbus EAA Chapter 729 Inc.	\$15,000.00
Lilly GIFT VIII Matching Admin Fund	

### PASS-THROUGH FUND GRANTS cont.

Lincoln-Central Neighborhood Family Center	\$100,000.00
Lilly GIFT VIII Matching Admin Fund	

## UNRESTRICTED FUND GRANTS

Grant Granting Fund	Amount
International Community Development Inc. of Columbus Heritage Fund – Community Fund	\$750.00
United Way of Bartholomew County Heritage Fund – Community Fund	\$50,000.00
Game Changer, Inc. Heritage Fund – Community Fund	\$2,500.00
Indiana Immunization Coalition Heritage Fund – Community Fund	\$5,000.00
kidscommons Heritage Fund – Community Fund	\$1,000.00
Foundation for Youth Heritage Fund – Community Fund	\$10.00
Ecumenical Assembly of Bartholomew County Churches / Love Chapel Heritage Fund – Community Fund	\$16,700.00
Heritage Fund – Community Fund George W. and Glowdine E. Budd Memorial Fund	\$6,796.00
Advocates for Children Heritage Fund – Community Fund	\$500.00
Indiana University Accounts Receivable Heritage Fund – Community Fund	\$12,150.00
Indiana University - Office of Research Administration Heritage Fund – Community Fund	\$12,150.00
Columbus Area Chamber Foundation Heritage Fund – Community Fund	\$60,000.00
Bartholomew County Public Library Heritage Fund – Community Fund	\$11,482.00
Community Education Coalition Heritage Fund – Community Fund	\$50,000.00
Bartholomew County Historical Society Heritage Fund – Community Fund	\$1,000.00
REACH Columbus, Inc. Heritage Fund – Community Fund	\$3,000.00
South Asian Foundation of Bartholomew County Heritage Fund – Community Fund	\$5,000.00

**UNRESTRICTED FUND GRANTS cont.**

Turning Point Domestic Violence Services Heritage Fund – Community Fund	\$1,000.00
Foundation for Youth HHeritage Fund – Community Fund	\$65,000.00
Hawcreek-Flat Rock Area Endowment Fund Heritage Fund – Community Fund	\$3,500.00
Columbus Area Arts Council Heritage Fund – Community Fund	\$10,000.00
Family Service, Inc Heritage Fund – Community Fund	\$80,277.50
The Arc of Bartholomew County Heritage Fund – Community Fund	\$20,000.00
United Way of Bartholomew County HHeritage Fund – Community Fund	\$22,500.00
Bartholomew County Public Library Heritage Fund – Community Fund	\$50,000.00
Andy Critzer Memorial Scholarship Fund Heritage Fund – Community Fund	\$20,000.00
Su Casa Heritage Fund – Community Fund	\$40,000.00
Benjamin R. (Mickey) King Endowed Fund Heritage Fund – Community Fund	\$311.00
Indiana Immunization Coalition Heritage Fund – Community Fund	\$5,000.00
Columbus Regional Health Foundation Heritage Fund – Community Fund	\$39,600.00
Riversong Music, Inc. Heritage Fund – Community Fund	\$1,175.00
Foundation Giving Hope Inc. Heritage Fund – Community Fund	\$3,000.00
Su Casa Heritage Fund – Community Fund	\$3,000.00
Next Gen Downtown Fund Heritage Fund – Community Fund	\$75,000.00
Bartholomew Consolidated School Corp Heritage Fund – Community Fund	\$40,000.00

Lincoln-Central Neighborhood Family Center Heritage Fund – Community Fund	\$5,000.00
Bartholomew County Parks Department Heritage Fund – Community Fund	\$13,500.00
The Arc of Bartholomew County Heritage Fund – Community Fund	\$3,000.00
Bartholomew County Public Library Heritage Fund – Community Fund	\$15,000.00
Heritage Fund Supporting Organization Heritage Fund – Community Fund	\$3,000.00
Indiana Landmarks Heritage Fund – Community Fund	\$12,500.00
IU Foundation Heritage Fund – Community Fund	\$2,500.00
Calvary Pentecostal Church Heritage Fund – Community Fund	\$2,900.00
Lincoln-Central Neighborhood Family Center Heritage Fund – Community Fund	\$4,000.00
Sans Souci, Inc. Heritage Fund – Community Fund	\$8,885.00
Indiana University Foundation Heritage Fund – Community Fund	\$11,501.00
Sandi's Closet, Inc. Heritage Fund – Community Fund	\$17,860.00
International Community Development Inc. of Columbus Heritage Fund – Community Fund	\$750.00



PERSONAL FOUNDATION FUND GRANTS	
Grant Granting Fund	Amount
Council for Youth Development Mark & Wendy Elwood Foundation	\$20,500.00
Columbus Area Chamber Foundation Mark & Wendy Elwood Foundation	\$1,000.00
Friends of Animal Care Services Mark & Wendy Elwood Foundation	\$2,220.00
Columbus Area Chamber Foundation Mark & Wendy Elwood Foundation	\$1,000.00
Landmark Columbus Foundation Mark & Wendy Elwood Foundation	\$5,000.00
Sri Ganesh Mandir Hindu Temple Mark & Wendy Elwood Foundation	\$2,000.00
Clarity of South Central Indiana Mark & Wendy Elwood Foundation	\$2,500.00
Film Independent Inc. Mark & Wendy Elwood Foundation	\$30,000.00
Franklin College Mark & Wendy Elwood Foundation	\$25,000.00
Next Gen Downtown Fund Mark & Wendy Elwood Foundation	\$20,000.00
IU Foundation Mark & Wendy Elwood Foundation	\$10,000.00
Bartholomew County Historical Society Mark & Wendy Elwood Foundation	\$500.00
Columbus Area Arts Council Mark & Wendy Elwood Foundation	\$10,000.00
Mayor's Government Scholarship Fund Mark & Wendy Elwood Foundation	\$100.00
Farm Youth Shooting Program Inc Mark & Wendy Elwood Foundation	\$1,000.00
Turning Point Domestic Violence Services Mark & Wendy Elwood Foundation	\$5,000.00
Foundation for Youth Mark & Wendy Elwood Foundation	\$25,000.00

Franklin College Mark & Wendy Elwood Foundation	\$25,000.00
The Nala Fund Mark & Wendy Elwood Foundation	\$1,000.00
REACH Columbus, Inc. Mark & Wendy Elwood Foundation	\$10,000.00
Landmark Columbus Foundation Endowment Fund Mark & Wendy Elwood Foundation	\$50,000.00
United Way of Bartholomew County Mark & Wendy Elwood Foundation	\$10,000.00
Tiger Woods Charity Event Corp Mark & Wendy Elwood Foundation	\$16,500.00
IU Foundation Mark & Wendy Elwood Foundation	\$30,000.00
Columbus Regional Health Foundation Mark & Wendy Elwood Foundation	\$50,000.00
Friends of Animal Care Services Mark & Wendy Elwood Foundation	\$2,500.00
Columbus Christian School Smith Family Fund	\$5,000.00
Columbus East High School Smith Family Fund	\$1,000.00
Columbus North Bulldog Boosters, Inc. Smith Family Fund	\$1,000.00
Especially Kidz Health & Rehabilitation Center Smith Family Fund	\$1,000.00
Police Athletic Activities League Smith Family Fund	\$2,500.00
Willow Crossing Health & Rehabilitation Smith Family Fund	\$5,000.00
Thrive-Alliance Voelz, Reed , & Mount Foundation	\$500.00
ARC of Jackson County Voelz, Reed , & Mount Foundation	\$1,000.00
Gateway Services Voelz, Reed , & Mount Foundation	\$1,000.00

## PERSONAL FOUNDATION FUND GRANTS cont.

Just Friends Voelz, Reed , & Mount Foundation	\$1,000.00
Our Hospice of South Central Indiana Voelz, Reed , & Mount Foundation	\$1,000.00
Perceptions Yoga, Mindfulness and Art Inc. Voelz, Reed , & Mount Foundation	\$1,000.00
Sandi's Closet Voelz, Reed , & Mount Foundation	\$1,000.00
Southern Indiana Taiko Drumming Voelz, Reed , & Mount Foundation	\$1,000.00
Bartholomew Consolidated School Foundation Voelz, Reed , & Mount Foundation	\$1,500.00
REACH Columbus, Inc. Voelz, Reed , & Mount Foundation	\$2,500.00

## HERITAGE FUND COMMITTEES

### Executive Committee – Tracy Souza

Lori Thompson – Chair  
Alice Johnson – Vice Chair  
Phil Luzius – Secretary  
Michelle Schaefer – Treasurer & Finance & Audit  
Courtney Metzger – Development

### Development Committee – Kristin Munn

Courtney Metzger – Chair  
Jeff Brown – Board member  
Tom Harmon – Board member  
Lora Mount – Board member  
Dan Arnholt – community advisor  
Charles Edwards – community advisor  
Laura Garrett – community advisor  
Jason Hatton – community advisor  
Brian Russell – community advisor

### Finance / Audit Committee – Stephanie Seaborne

Michelle Schaefer – Chair  
Jim Roberts – Board member  
Jeff Brown – Board member  
Anuja Mazgaonkar – Board member  
Andy Pajakowski – community advisor

### Governance & Planning Committee – Tracy Souza

Mark Elwood – Chair  
Alice Johnson – Board member  
Lori Thompson – Board member  
Kathy Oren – Board member  
Tracy Haddad – Board member  
Tom Harmon – Board member  
Mary Ferdon – Board member  
Jim Bickel – community advisor  
Brett Merritt – community advisor  
Jesse Brand – community advisor  
Jeff Brown – community advisor  
Rick Johnson – community advisor  
Jim Schacht – community advisor  
Hutch Schumaker – community advisor

## HERITAGE FUND COMMITTEES cont.

### Grants Committee – Kyle Hendricks

Alice Johnson – Board member  
Sarla Kalsi – Board member  
Mark Stewart – Board member  
Maggie Kamman – community advisor  
Mark Lindenlaub – community advisor  
Angie May – community advisor  
Adam Miller – community advisor  
Rajib Panda – community advisor  
Ro Whittington – community advisor  
Laura Miller – community advisor

### Investment Review Committee – Stephanie Seaborne

Mickey Kim – Chair  
Michelle Schaefer – Treasurer  
Jody Littrell – community advisor  
Andy Pajakowski – community advisor  
Neil Heppler / Fourth Street Investment Partners – Consultant  
J.K. Keach, Jr. – Donaldson Capital Management

### General Scholarship Committee – Jeanette Marsh

Reinhold Hill – Chair / Board member  
Johnnie Edwards – Board member  
John Whittington – Board member  
Matt Herron – community advisor  
Kathy Griffey – community advisor  
Daniel Noel – community advisor  
Shirley Trapp – community advisor

### Lilly Scholarship Committee – Jeanette Marsh

Aida Ramirez – Chair / Board member  
Carl Lienhoop – Board member  
Matt Kirr – community advisor  
Scott Poling – community advisor  
Robin Hilber – community advisor  
Erin Hawkins – community advisor

### Separate Selection Committee – Jeanette Marsh

Nicholas Sprague – Chair / Board member  
David Speidel – community advisor  
Thorn Murphy – community advisor  
Rob Fischvogt – community advisor  
Anji McKinney – community advisor  
Megan Shaff – community advisor  
Yamalieth Martinez – community advisor  
Elizabeth James – community advisor  
Jeanine Scheidle – community advisor  
Robert Finkel – community advisor  
Cassie Finkel Otte – community advisor  
Aleesa Dickerson – community advisor  
Adam Ulrich – community advisor  
Elisabeth Eaton – community advisor  
Erin Fischer – community advisor  
Chris Newlund – community advisor  
Pat Ward – community advisor  
Brooke Hawkins – community advisor  
Diane Doup – community advisor  
Erin Hawkins – community advisor  
Doug Harter – community advisor  
Angie May – community advisor  
Jamie Walter – community advisor  
Ryan Jackson Payton – community advisor  
Joann Ferguson – community advisor  
Marcia Sanders – community advisor  
Marie Napier – community advisor  
Margaret Tramell – community advisor  
Sharon Fisher – community advisor  
Tracy Hoffman – community advisor  
Terry Chytka – community advisor  
Jason Borders – community advisor  
Lisa Shafran – community advisor  
Dr. Edward Probst – community advisor  
Pat Probst – community advisor  
Myra Foster – community advisor  
Valley Rogers – community advisor  
Rich Gold – community advisor  
Norbert Nusterer  
Kristin Munn  
Stephanie Seaborne

## HERITAGE FUND COMMITTEES cont.

### Women's Guiding Circle – Kristin Munn

Katie Glick – Chair/Board member  
Lesley Bradley – community advisor  
Abigail Bushur – community advisor  
Tracy Heaton de Martinez – community advisor  
Barbara Reckers – community advisor  
Angelina Rodriguez – community advisor  
Brandi Rodriguez – community advisor

### Racial Equity Committee – Tracy Souza, Kyle Hendricks

Tom Harmon – Co-Chair/Board member  
Brad Davis – Co-Chair/Board member  
Johnnie Edwards – Board member  
Alice Johnson – Board member  
Felipe Martinez – Board member  
Mark Stewart – Board member  
Lori Thompson – Board member  
John Burnett – community advisor  
Matt Kirr – community advisor  
Kelly Benjamin – community advisor  
Jarvis Cooper – community advisor  
Laura Leonard – community advisor  
Tom Vujovich – community advisor

### Marketing & Communications Committee – Amy Laker

Erin Hawkins – community advisor  
Maddie Paul – community advisor  
Kristin Munn

## HONORS

2024 Women in Leadership Designees  
Columbus Area Chamber of Commerce  
Cheryl Finke  
Hope Ladies Care Club  
Clifton Kirkpatrick  
Elizabeth Kirkpatrick  
David Tiede and Sharon Risk Stark  
Eric Stark and Adriano Caldeira  
Eleanor & Asher Pandit  
Diane Doup  
Lori Thompson & Ben Downing  
Brad & Lactetia Ulery  
Louis Joyner  
Columbus Culture Club  
Mary Stroh  
Patrick Sabo  
A Legacy of Leadership:  
Our Mayor's Remember  
Johnson Ventures  
Nala Palooza  
Hope Veterinary Clinic  
Our Parents  
Mr. and Mrs. James Tibbetts  
Pastor Tom Going  
Gilda & Joe Wettschurack  
Richard & Sharon Mauren  
Jack & Lana Scherer  
Rovene Quigley  
Jenny DeJarnette  
Tim & Sherri McKinney  
Elks Lodge #521  
Timothy M. Andrews  
Donna Brauning  
Tom & Mary Harmon  
Lynn & Janice Montgomery  
Tom & Mary Harmon  
Celeste Yonushonis  
Wilma Doup  
Diane Doup  
Terri Kelly  
Darren & Matt Buffo



## MEMORIALS

Dennis Roberts	Bob Sonntag
Pete & Pam Tully	Pete & Pam Tully
Mark Miller	Carmelita A. Jump
Irida Miller	Brian & Allison Clark
Merrill & Norma Clouse,	Carol Yvonne Robinson
Scott Alan Johnson & Tammy Clouse	SIHO Insurance Services
Kathleen Clouse	Charles Robert Ritz
A. Warren Phillips & Jane Frost Phillips	SIHO Insurance Services
Carol Phillips Wright	Cindy Diewert Gosney
Abby Pierce	Peter & Lois
Jacquelyn Douglas	Danny Altmiller & Elizabeth Altmiller
Alyn & Edity Lyn	Robert & Susan Fisco
Ryan & Jean Hou	Dick Thayer
Andy Critzer	Herbert & Margie Boilanger
Andy Critzer Memorial Golf Tournament	Dr. Kwok-Sang Chui
Antionette (Toni) Lyons	Linda Chui
SIHO Insurance Services	Dr. Richard Chaille
Arthur Jewell	Columbus Animal Hospital
Ralph Jewell	Dwight Carter
Barbara L. Whipker	Daniell & Melissa Vermillion
Columbus Animal Hospital	Dwight Carter
Betty Pinsonneault	Susan Huntington
Ken & Kim VanArsdall	Eric Mitchell
Beverly Belush	SIHO Insurance Services
Richard Belush	Frank & Carolyn Souza
Bob Kelley	Matt & Tracy Souza
Paul and Debbie Richardson	Gary & Justin Hilber
Lisa and Rich Eidman	Robin Hilber
Leroy & Karen	Genevie "Jennie" Ray
Becky & Sue	SIHO Insurance Services
Mike & Linda	George Noblitt
C Frank & Nancy	John & Arleen Keele
Steve & Donna	Gladys M. Andrews
Jim & Chris	Timothy M. Andrews
Charles & Betty	Glenn Brazel
Charles & Elaine	The Buffo Family
Becky & Jim Jones	Gustav & Adele Potthoff
Frank & Christine Hartsell	Steve and Deanne Bowman Olson
Derek Whitehead	Jane Scott
Brooke	SIHO Insurance Services
	Jennifer Vaughn
	SIHO Insurance Services

Jim Dietz	John McCormick
Brent & Becky Church	Amy McCormick
Jim Huntington	John Moran
Amelia Huntington	Jim & Tenza Flowers
Jim Kelly	John Perry & Gladys Simmons
Sam & Grace Pentzer	Donald & Roseann
Robert and Sandy	John Robertson
Paulette & Dennis Roberts	Sandra Miller
Don & Diane Michael	Howard C. Andrews
J. Eric Neal	Cline, King & King, P.C.
Ethel Stillabower	Diana & Russell Burton
Toni Abbott	David & Michelle Emmert
Thomas & Hedy Kelly	Carolina Supply Inc
Cinthia Smith	Joyce Meier
Jerry & Catherine Leister	Buck & Carolyn Imlay
Karen Jones	John, Connie & the Ray Family
Abby Smith	Tom & Cheryl Finke
Pat & Fee Kelly	Barb, Pat, Brandy & the boys
Craig and Becky	Jonathan & Edith
Dr. Rolf Loescher & Dr. Donnamarie	Ben, Laura & the Miller Family
Darcy-Loescher	Randy Hampton
Darlene Bricker	Celeste Yonushonis
Scott & Lynne Henry	Jordyn Massard
Rick Colglazier	SIHO Insurance Services
George & Sharon Gratz	Julie McKinney
Mary Ann McCray	Susie Huntington
Tim Solso	Vickie Welsh-Huston
Diane Gerstle Dobbins	Karen Ann Coffman
Steve and Jennifer	James Coffman
Roger & Janet Lang	Kurt Schwarze
Darlene & Steve Bricker	Gilda & Joe Wettschurack
Wayne and Karen	Jesse & Geri
Dick & Leigh Oney	Larry Taulman
Susan & Mike Harrison	Norman and Susan Blizzard
Friend and coworker	Lewis Essex
Darren & Matt Buffo	Judith B Shepherd
Joe Tom Atkins	Linda Baker
Amy Hamilton	Daniel and Melissa Vermillion
Judith Shepherd	Lowell Anderson
Tom & Jill Bunger	Dortha
	Marilyn Stultz
	Diana L. Mann

## MEMORIALS cont.

Marion Hawley	Rebecca “Becca” Mae Ridings
Diana Mann	SIHO Insurance Services
Marjorie Schmeckebier	Rena Dillman
Judith Eaton	Patricia May
Mark Miller	Pamela May
Lori Phillips	Robert & Peggy May
Mary Anne Heise	Pamela May
Scott Heise	Patricia May
Merrill	Robert & Phyllis Bayer
Ken & Mary Chandler	Dr. & Mrs. Stephen Bayer
Merrill & Norma Clouse, Scott Alan Johnson,	Robert Hooker
Tammy Clouse & Jerry Bennett	Mary Jane Hooker
Lori Wells	Roger Embry & Brenda Foster
Michael Brock	Hauser High School Class of 1972
Sondra Sue	Sgt. Jonathan M. Hunter
Mike Spencer	Thomas Harmon
Cummins New and ReCon Parts	Pyramid Custom Packaging
Ron Nelson	Aton’s Self Storage
Matt and Tracy Souza	Robin Curry
Anonymous	Lucas Brothers Sandwich Shop
NRP Procurement Team	Fraternal Order of Eagles #741
Su Casa	John 3:16 3-on-3 Basketball Tournament
Brent Lollar	Steve Wiggins
My son (Zach Deak)	Sherry and David
Momma Deak	Teresa Jo Martin
Norma Jean & Leon Hitchcock	SIHO Insurance Services
Ed & Retha	Thomas A. Mullett
Ori Dog	Mike Mullett & Patti March
Kristen Seymore	Thomas Beeker
Patrick Bowman	Daniel and Melissa Vermillion
Jason & Stephani Hoy	Thomas L. Johns, Mark Case, Richard Keller,
Frederick & Elizabeth	Larry Thayer, Ron Cornett, Marin Finke &
Rick & Judy	Robert Gilliland
Rick & Judy	Lavon Wasson, John & Lisa Long,
Phil Houston	Ben & Laura Miller, Vickie Tedder
Margaret Houston	& Joe Talkington
Lee & Jewell Arthur	
Philip Miller	
Irida Miller	
R Adair	
SIHO Insurance Services	

Thomas Talbert
Mike & Jenni
Ellen
Jon & Natalie
David & Kelli
Jim & Peggy
Jim
John & Arleen
David & Tracey
Nick & Camille
Jacqueline
Christine Beach
Fran Herbert
Sharon Bloch
Dennis & Kelly Higgs
Andrew and Mona Dale
Timothy Ray Bean
Bean’s Crew
Riley Wunder
Vivian McKinney
SIHO Insurance Services
Zach Deak
Amy Layman
Anonymous
Chip & Julie Orben
Raj Maturi
Becky Reese
Zap Supernova
Sherry Stark

## SCHOLARSHIPS

### **Abbott Forrester Garn Scholarship**

Maleah Dyette

### **African American Foundation of Bartholomew County**

A'Kia Pearson  
JR Phillips-Wynne  
Kayla Jones  
Macy Golden  
Ndeye Marieme Niang  
Oluwafemi Ige  
Savion Miles

### **Analytical Engineering, Inc. (AEI) Scholarship**

Manya Suresh  
Preetham Yerragudi  
Yehor Ivanenko

### **Andrew Parker Memorial Scholarship**

Alijah Murray  
Angie Vazquez

### **Andy Critzer Memorial Scholarship**

Alexander Clark  
Pierce Arnholt

### **Ann Ward Fine Arts Scholarship**

Coleen Davis  
Grace Lykins  
Kendall Demaio  
Maddison Uphaus

### **Anna Newell Brown Awards for Vocal Excellence**

Rebekah Woodruff  
Rebeca Natalie Centu Garcia  
Elizabeth Alderfer  
Annie Green  
Gavin Foley  
Amelia Maddox  
Austin Clark  
Antionette Hughes

### **Annette Siler Hungerford Memorial Scholarship**

Seth Poindexter

### **Anthony Moravec Scholarship**

Abigail Carr  
Allyssa Deweese  
Anna Asher  
Daheavenly Smith  
Hezekirah Tipton  
Jacob Dettmer  
Jaylie Brannon  
Mikenze Bostic  
Carlee Menefee

### **Barbara W. Stewart Scholarship**

Carlie Menefee

### **Barth/Brown County Medical Society Medical Education Scholarship Fund**

McKenna Major

### **Bartholomew County REMC – Alex Barkes Memorial Scholarship**

Leah Bachmann

### **Bartholomew County REMC Scholarship**

Brilynn Martin  
Rachel Kuhlman

### **Becky S. Green Memorial Scholarship**

Hilary Yang

### **Betty F Brown Awards for Instrumental Excellence**

Santi De Luna  
Grace Huang  
Rishabh Rajesh  
Jasmine Yang  
Sreepadaarchana Munjuluri  
Emma Cloud

### **Bill and Jody Harter Scholarship**

John Beck

### **Bill and Norma Perry Scholarship**

Deliani Irizarry-Reyes  
Manasi Indalkar

### **Bill and Sally Hanley Excellence in Teaching Award**

Emma Jensen

### **Blake Hanger Memorial Scholarship**

Austin Clark

### **BME Sisters Scholarship**

Manya Suresh

### **Bob and Marcy Oswald Engineering Scholarship**

Henry Ulrich

### **Bob Marshall-Bob Gordon Memorial Scholarship for Journalism**

Chasney Ward

### **Casey Fiske Memorial Scholarship**

Charlee Vail

### **Charles D. Shepherd Memorial Scholarship**

Layne Hoeflinger

### **Charles M. and Frances W. Condit Nursing Education Scholarship**

Carlie Menefee  
Lauren Grider  
Sivangi Patel

### **Class of 1948 Scholarship Fund**

Carly Otte

### **Columbus Business and Professional Women's Scholarship**

Abigail Carr

### **Columbus Crush Scholarship**

Siddhant Jain

### **Columbus Rotary Scholarship in Honor of Judson S. Erne**

Katelyn Stetter

### **Columbus Youth Hockey – Bryan Ritz Memorial Fund – Travel**

Garrett Uy  
Ayden Richardson  
Sydney Morrow  
Ashton Nguyen  
Max Vandagriff  
Carter Glaser  
Rowan Correll  
Logan Wallace

### **Corrilla B. Lentz Scholarship**

Hallie Steele

### **Dana Barton Merter Memorial Tennis Scholarship**

Austin Clark

**SCHOLARSHIPS cont.**

**Daniel Altmiller and Elizabeth Altmiller  
Memorial Scholarship**

Brilynn Martin

**Dave Galle Memorial Scholarship**

Anna Asher  
Jaylie Brannon

**Developmental Services, Inc. (DSI)  
William K. Hadar Scholarship**

Madalyn Baker

**Doug Leonard Healthcare  
Occupations Scholarship**

Jaylie Brannon

**Dr. Cleve James Francoeur, Jr.  
Memorial Scholarship**

Amanda Wissmann

**Earl E. & Mildred L. Bless Hudson  
Scholarship for Education**

Hezekirah Tipton

**Edward Jones Investments Scholarship**

Maleah Dyette

**Empowering Success Scholarship**

Allyssa Deweese

**Foods and/or Nutrition  
Careers Scholarship**

Rachel Jones

**Frank Burbrink Memorial 4-H Scholarship**

Kathryn Stoner

**Fred L. Armstrong Future  
Leaders Scholarship**

Maximus Freeman

**Goldie Gibson Memorial  
Endowment Scholarship**

Cheyenne Hutchinson  
Janelly Villalobos

**Harold H. Heminger Graduate  
School Scholarship**

Abigail Carr  
Angie Vazquez  
Kingen Burbrink

**Helmut O. von Buchler and Hartmut K.  
von Buchler 4-H Memorial Scholarship**

Riley Croddy

**Henry, Clara and Alice  
Weichman Scholarship**

Aaron Sims

**Heritage Fund Memorial Scholarship**

Abbigail Schiefer  
Frankie Polyak  
John Warren

**J. Albert Finkel and Irma Jane  
Finkel Scholarship**

Alivia Jordan  
Kathryn Stoner  
Kendrick Crowder  
Lillian Steinwedel

**J. Howard Beam Memorial Scholarship**

Alexandra Osburn

**Jennifer Strietelmeier Memorial  
Art Scholarship**

Isabella Kilps

**John and Geneva Wickens Scholarship**

Hallie Steele

**John McLachlan Soccer Scholarship**

Kylie Hatcher  
Samuel Taylor

**John R. Skobel III Memorial Scholarship**

Tyrrice Degraffenreid

Jones Sisters Scholarship  
Addyson Barriger

**Julie M. McKinney Memorial Scholarship**

Carly Otte

**Karen Ann Coffman Memorial  
Nursing Scholarship**

Carlie Menefee  
Lauren Grider  
Sivangi Patel

**Kirby and Caroline Risk Scholarship**

Ella Gray Partin

**Lacey Family Scholarship**

Siddhant Jain

**LHP Scholarship**

Evie Hipwood

**Lilly Endowment Community  
Scholarship Program**

Sivangi Patel  
Nadia Harris

**Louis A. and Kathy M.  
Giovanini Scholarship**

Daheavenly Smith

**Lucien J. & Maryann J. Chadwick  
and Sam & Edith Shanks  
Memorial Scholarship**

Austin Clark

**Marguerite Burns Rust Scholarship  
for Animal Science Studies**

Angela Ruiz

**Marguerite Burns Rust Scholarship Fund**

Hannah Beck

**Marvin Johnson Scholarship**

Lillian Lacey

**Mary Ann Heise Memorial Scholarship**

Hallie Steele

**Mary E. Behler Memorial Scholarship**

Paige Hatter

**Mayor's Government Scholarship**

Hannah Gladden

**Michael R. Rogers Memorial Scholarship**

Layne Hoeflinger

**Mildred and Homer Crank Scholarship**

Alexandra Osburn  
Iris Crough (Bo)

**Myron Glick Memorial Scholarship Fund**

Hannah Beck

**One Step At A Time Scholarship**

Daheavenly Smith

**Patrick Bowman Memorial Music Fund**

Rozlyn Turner



**SCHOLARSHIPS cont.**

**Paul and Prudence Steinbarger  
Memorial Scholarship**

Amrit Kar  
Kihrun Scott  
Mackenzie Meyer  
Sam Johnson  
Zoe Barnsfather

**Phil Jackson Memorial Fast-Pitch  
Softball Scholarship**

Sierra Norman

**Philip R. Miller Scholarship  
for the Visual Arts**

Mia Hess

**Purdue Alumni Advisory Council  
Scholarship**

John Beck

**Ray Amlung Memorial Scholarship**

Angie Vazquez  
Bryce Tekulve  
Isaac Kannianen

**Reams Family Award for Excellence  
in Teaching**

Carrie Sanford  
Sydney Morey  
Sarah Brumberg

**Robert J. Sonntag Memorial Scholarship**

Angie Vazquez

**S. Edgar & Delora L. Lauther  
Memorial Scholarship**

Amrit Kar  
Brady Redelman  
David Zhang  
Evan Martinez  
Gabrielle Cooper  
Isabella Kilps  
Jeremiah Kuhlman  
Kylie Hatcher  
Maleah Dyette  
Manasi Indalkar  
Molly Bray  
Serenity Riddle  
Siddhant Jain  
Deliani Irizarry-Reyes

**Sgt. Jonathon Michael Hunter  
Legacy Scholarship**

Fisher Mantooth

**Steve Antcliff Memorial Scholarship**

Alijah Murray

**The Barker Family Scholarship**

Anna Asher

**The Martha Kalb  
“You GO Girl” Scholarship**

Messiah Trapp

**The Reverend Dr. William R. Laws  
Memorial Scholarship**

Angie Vazquez  
Janelly Villalobos  
Riley Croddy

**Timothy Ray Bean Memorial Scholarship**

McKenna Major

**Todd & Julie Bergman Scholarship**

Deliani Irizarry-Reyes

**Toyota Material Handling Scholarship**

Daheavenly Smith  
Jaylie Brannon  
Serenity Riddle

**Waldo M. and Madge C.  
Harrison Scholarship**

Charlee Vail

**Zach Deak Golden Boot Scholarship**

Kylie Hatcher

**Hispanic Latino Scholarship Fund**

Marilu Alamo  
Sherlyn Bonilla Hernandez  
Jose Tomas Carrasco Antonio  
Jennifer Castellanos Villatoro  
Maria Jesus De La Cruz Lopez  
Veronica Garciela Diaz Narvaez  
Marcela Herlinda Diego Baltazar  
Josselyn Garcia Vazquez  
Giovanni Gaspar Francisco  
Yesica Gaspar Francisco  
Enrique Hernandez Jimenez  
Maria Hernandez Sebastian  
Jesus Eduardo Hernandez  
Miriam Jazmin Herrera De La Cruz  
Arleth Landero  
Carlos Ivan Lezama Guzman  
Jose Yael Lezama Guzman  
Dulce F Marcos Romero  
Emmanuel de Jesus Martinez Cabrera  
Jovany Mata Hernandez  
Miranda Keith Mateo Sebastian  
Ruth Nohemi Diego Mateo Sleppy  
Gerzon Mendez Velasco  
Brenda Aracely Mendoza Pablo  
Metztli Geselle Morales Calleja  
Manolo Ivan Orellana Lemus  
Angi Ramirez Quirino  
Beatriz Rangel Garcia  
Maria del Carmen Robles Aguilar  
Arturo Rueda de Leon Castillo  
Katherine Sanchez Hernandez  
Lupita Trejo Montejo  
Rocio Yazmin Valerio Resendiz  
Jocelyn Vazquez  
Jacqueline Villeda Melendez

Heritage Fund will make available upon request copies of its audits and 990s (and 990-Ts when appropriate); names of its investment consultants and those responsible for the investment oversight; and information of fees charges (including investment and administrative fees. Heritage Fund commits to establishing a community that is welcoming to all. We believe our differences are a source of strength and that understanding, appreciating, and celebrating our differences will ensure a stronger and healthier community. Heritage Fund invites our donors, community partners and stakeholders to invest in creating a forward-thinking community that is welcoming, respectful and actively engaged in equity.

***Heritage Fund***